

ROADMAPS TO HEALTH ACTION AWARDS

Networking and Learning Collaborative Session

*Data, Measurement and Evaluation #2
December 7, 2015*



Roadmaps to Health Action Awards Networking and Learning Collaborative Session



▼ Participants (2)

Speaking:

▼ Panelists: 1



Joanne Lee (Host)



WEBEX PLATFORM

- Direct technical support: 1-866-569-3239
- Chat Box:
 - ▶ Enable/open
 - ▶ Be sure to submit questions, discussion items to “All Panelists”
- Find the Raise Hand function
- Muting Audio – please be aware of:
 - ▶ Whether your phone system plays music while on mute/hold
 - ▶ Minimizing background noise

Send to:

Select a participant in the Send to menu first, type chat message, and send...

Send

A WORD THAT DESCRIBES YOUR TEAM'S VIEW/APPROACH TO DATA AND EVALUATION



County Health Rankings & Roadmaps

Building a Culture of Health, County by County

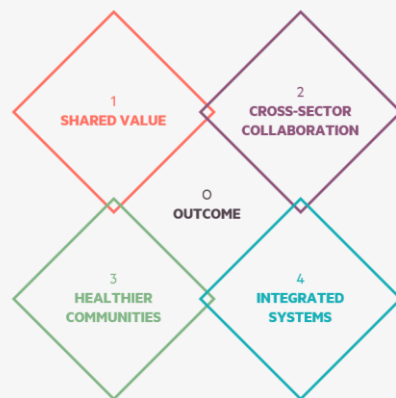
A Robert Wood Johnson Foundation program

RESOURCES AND TOOLS

Measuring What Works to Achieve Health Equity: Metrics for the Determinants of Health

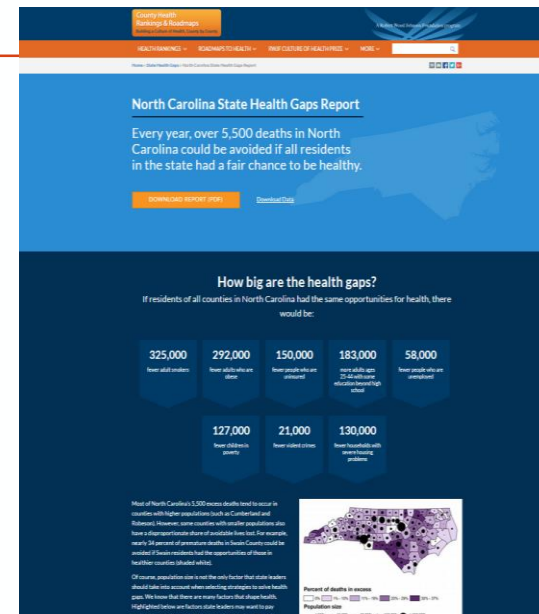
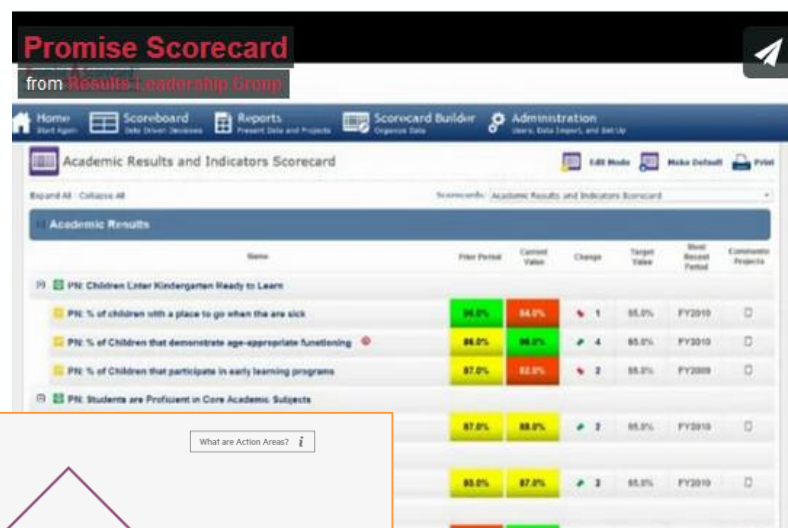
Prepared for the
Robert Wood Johnson Foundation

Original to the Foundation: June 2014
Revised for dissemination: June 2015



We're all in this together.
Explore the Action Framework to see how your work connects and contributes to building a Culture of Health.

[Learn More](#)



School Health Resource Inventory

Partner Name (organization name, program name)	Service and Program Provided	Eligibility Requirements	Location	Contact information	Referral Process
	<input type="checkbox"/> Medical <input type="checkbox"/> Dental <input type="checkbox"/> Mental Health <input type="checkbox"/> Social Services				
	<input type="checkbox"/> Medical <input type="checkbox"/> Dental <input type="checkbox"/> Mental Health <input type="checkbox"/> Social Services				
	<input type="checkbox"/> Medical <input type="checkbox"/> Dental <input type="checkbox"/> Mental Health <input type="checkbox"/> Social Services				
	<input type="checkbox"/> Medical <input type="checkbox"/> Dental <input type="checkbox"/> Mental Health <input type="checkbox"/> Social Services				
	<input type="checkbox"/> Medical <input type="checkbox"/> Dental <input type="checkbox"/> Mental Health <input type="checkbox"/> Social Services				
	<input type="checkbox"/> Medical <input type="checkbox"/> Dental <input type="checkbox"/> Mental Health <input type="checkbox"/> Social Services				

RESOURCE: YOUTH HEALTH SURVEYS

<http://www.communitiesthatcarecoalition.org/surveys>

Communities that Care

COALITION

Prevention works.
It's working here.

Navigation

- Home
- About
- Community Action Plan
- Workgroups
 - Community Laws and Norms
 - Parent Education
 - Regional School Health Task Force
- Surveys
 - Healthy Norms
 - CTC Awards
 - Partners
 - Contact

Youth Health Surveys

Since 2003, CTC has worked with school districts in Franklin County and the North Quabbin to conduct the annual Teen Health Survey of students in grades 8, 10 and 12. The survey examines student behaviors, and assesses "risk factors" that increase the likelihood of problem behaviors and "protective factors" that help keep our youth safe. Topics covered in recent surveys include mental health, violence in the community, attitudes about peer risk taking, dating and sexuality, exercise and nutrition, and decision-making. Using the results of the survey, we are better able to design programs, secure funding, and educate parents, students and the community.

Nine school districts participate in the regional survey: Athol/Royalston, Four Rivers Public Charter School, Franklin County Technical School, Frontier, Gill-Montague, Greenfield, Mohawk Trail, and Pioneer Valley, and Ralph C. Maher.

To broaden and enrich the information the surveys provide, we use three different survey instruments in a three-year cycle. Each survey has its particular strengths and uses.

For more information about the Teen Health Survey, contact Jeanette Voas.

The Prevention Needs Assessment Survey

The Prevention Needs Assessment Survey (PNAS) asks students about substance use and violence, and assesses risk and protective factors that underlie risky behaviors. The detail the PNAS provides on risk and protective factors in the school, family, and community have proven valuable for community assessment and strategic planning. CTC conducted the PNAS in area schools in 2003, 2006, 2009, and 2012 providing data to gauge trends over time. The trends show that substance use is down. We also see an improvement in school climate, an important contributor to healthy behaviors.

- 2015 report
- 2015 Powerpoint of data highlights
- 2015 questionnaire
- 2015 crosstab report

The Youth Risk Behavior Survey

The Youth Risk Behavior Survey (YRBS) was developed by the Centers for Disease Control and Prevention (CDC). Every other year, the CDC conducts a national YRBS, and the Massachusetts Department of Elementary and Secondary Education conducts a state YRBS. Using the YRBS locally therefore enables us to compare our young people to their peers in the state and nation as a whole. The YRBS examines only behaviors (not contributing factors) but covers a broader range of behaviors than does the PNAS. CTC used the YRBS to survey students in 2007, 2010 and 2013.

- 2013 tables of key measures (US-MA-local)
- 2013 questionnaire
- 2013 responses for all questions

The Custom Survey

In the third year in the cycle, CTC uses a survey of its own design, so as to explore emerging issues and issues of local importance that are not addressed in the PNAS or

Franklin County, MA

Photo Credit: The Recorder



County Health Rankings & Roadmaps

Building a Culture of Health, County by County

A Robert Wood Johnson Foundation program

LESSONS LEARNED



Monadnock Region, NH



Joplin, MO

DISCUSSION



- Questions about shared resource, lessons learned?
- *Any lessons learned from evaluating collective impact?*
- *Who is doing work around measuring positive change in increasing racial equity?*
- *How do we identify/select intermediate level indicators (beyond process) that show actual impact in 1-2 years?*

DISCUSSION

- *What are some appropriate intervening variables (risk and protective factors) and how do you measure them?*
- *How do we collect data, measure and evaluate across agencies that are doing different things? How do we get everybody on board and aligned?*
- Other discussion questions/issues?

NEXT STEPS

- Thoughts about future networking and learning on this topic of data, measurement and evaluation?
- Ideas for networking and learning around other affinity areas:
 - ▶ Community Engagement – *December 16 networking session*
 - ▶ Sustainability
 - ▶ Stakeholder/ Policymaker Engagement
 - ▶ Other?

ACTION AWARDS NETWORKING SUPPORTS

- Resource dissemination/sharing: via e-mail and web page
- Ongoing virtual networking and learning sessions
- Affinity matrix and contact list
- In-person meeting on March 2-3, 2016 in Chapel Hill –
Registration information will be sent early January
- Additional ideas welcomed! Share with Joanne Lee,
joanne_lee@activelivingbydesign.org, 252.347.9971

ROADMAPS TO HEALTH

ACTION AWARDS

Networking and Learning Collaborative Sessions

Thank you!

Please share your feedback using the chat box:

Type “+” and identify what worked well today

Type “-” and identify what could be improved