

**Roadmaps to Health
Action Awards Convening
Building Networks, Advancing Community Health Improvement
Community and Partner Engagement
March 3, 2016**

Sarita Turner
PolicyLink
Sarita@policylink.org



PolicyLink is a research and action institute dedicated to fostering equitable communities of opportunity by *lifting up what works*.

PolicyLink

Lifting Up What Works®



What Equity Is?

- Full inclusion of all residents in the economic, social, and political life of the region, regardless of race, ethnicity, age, gender, neighborhood of residence, or other characteristics
- Achieving equity requires a strong commitment to partnerships that result in real change for the better, in the lives of people.
- Theory of Change - equity investments are not 'charity'. Equity is smart strategic investments in our most valuable capital – human beings.



What is the Difference Between Equity and Diversity?

Equity is just and fair inclusion into a society in which all can participate, prosper and reach their full potential.

Diversity focuses on *participation*...

- In November 2012 we were reminded of this when President Barack Obama was re-elected by the most diverse electorate in U.S. history,

But what about *prosper and reach their full potential*

- In the same period, nationwide unemployment rates were 6.3 percent for whites, 9.8 percent for Hispanics, and 14.0 percent for blacks.

What is the Difference Between Equity and Equality?

Do you need shoes? Of course you do!

Here take mine! Thank you – They don't fit....Awww cmon! I thought you needed shoes.....



What can happens when you have to wear shoes that don't fit?



Characteristics of Equitable Communities and Neighborhoods

All residents:

- feel safe and possess a sense of belonging
- are fully able to participate in the economy
- contribute to the readiness for the future
- connect to assets and resources and opportunities

Strong equitable neighborhoods and regions:

- **Foster** economic vitality
- **Offer** access through place-base investments and connectivity
- **Cultivate** readiness for the future

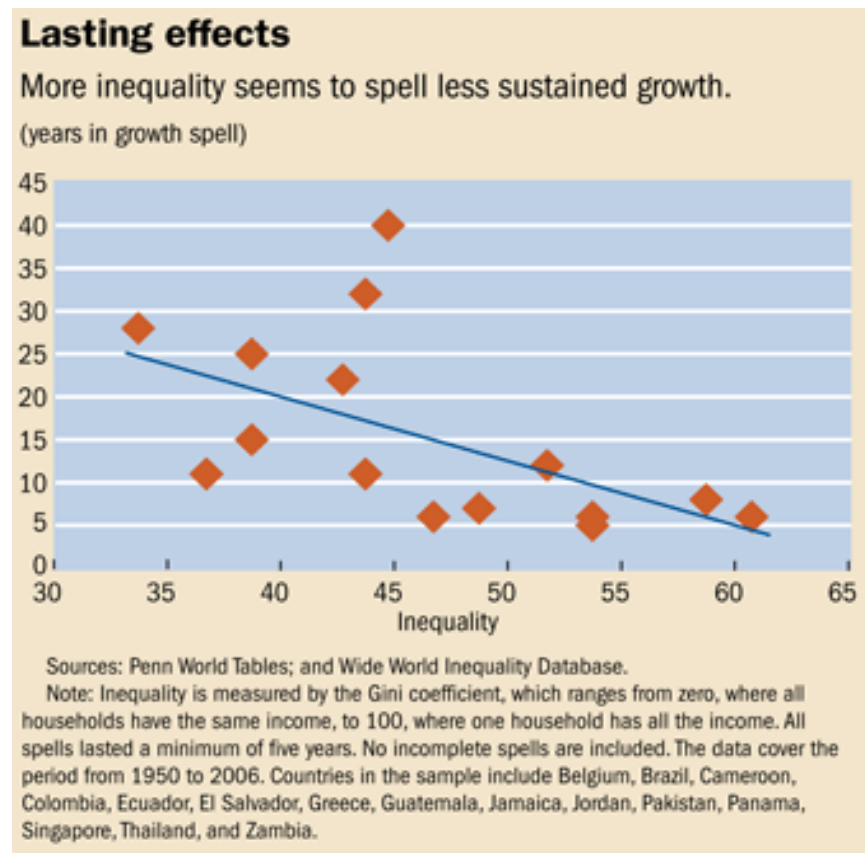


Equity is the Superior Economic Growth Model for our Nation

Inequality is bad for the economy

According to the IMF, lower inequality results in faster and more sustained economic growth.

- A [2011 study](#) analyzed over 100 countries and found that every 10 percent increase in income inequality increased the length of a country's growth cycle by 50 percent.
- A [2014 study](#) found lower inequality is correlated with faster economic growth.



Equity is the Superior Economic Growth Model for our Nation

A growing consensus

The Washington Post

“Income inequality hurts economic growth, researchers say”

The New York Times

“Income Inequality May Take Toll on Growth”

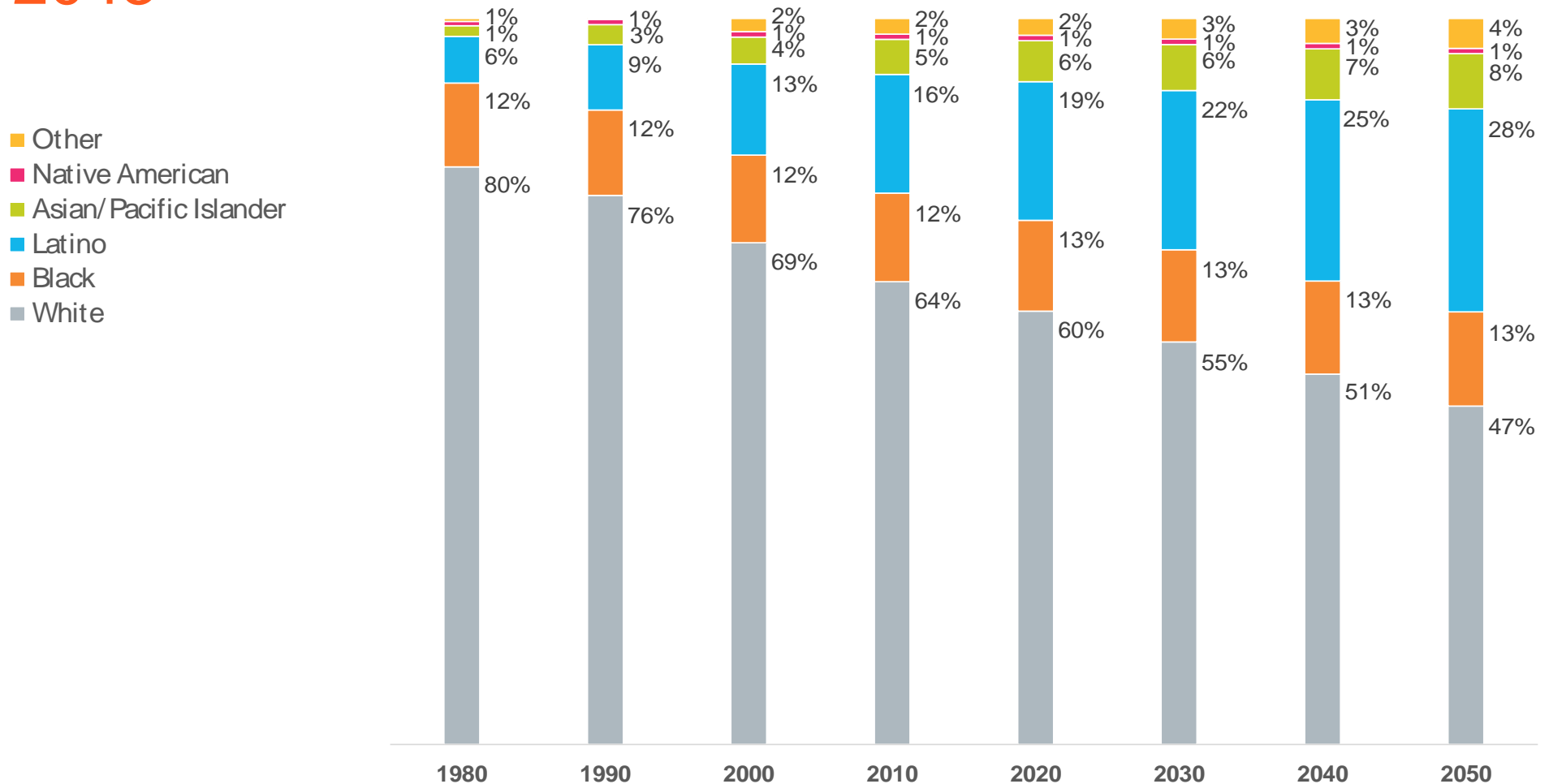
theguardian

“IMF study finds inequality is damaging to economic growth”

**The
Economist**

“Inequality v growth. Up to a point, redistributing income to fight inequality can lift growth”

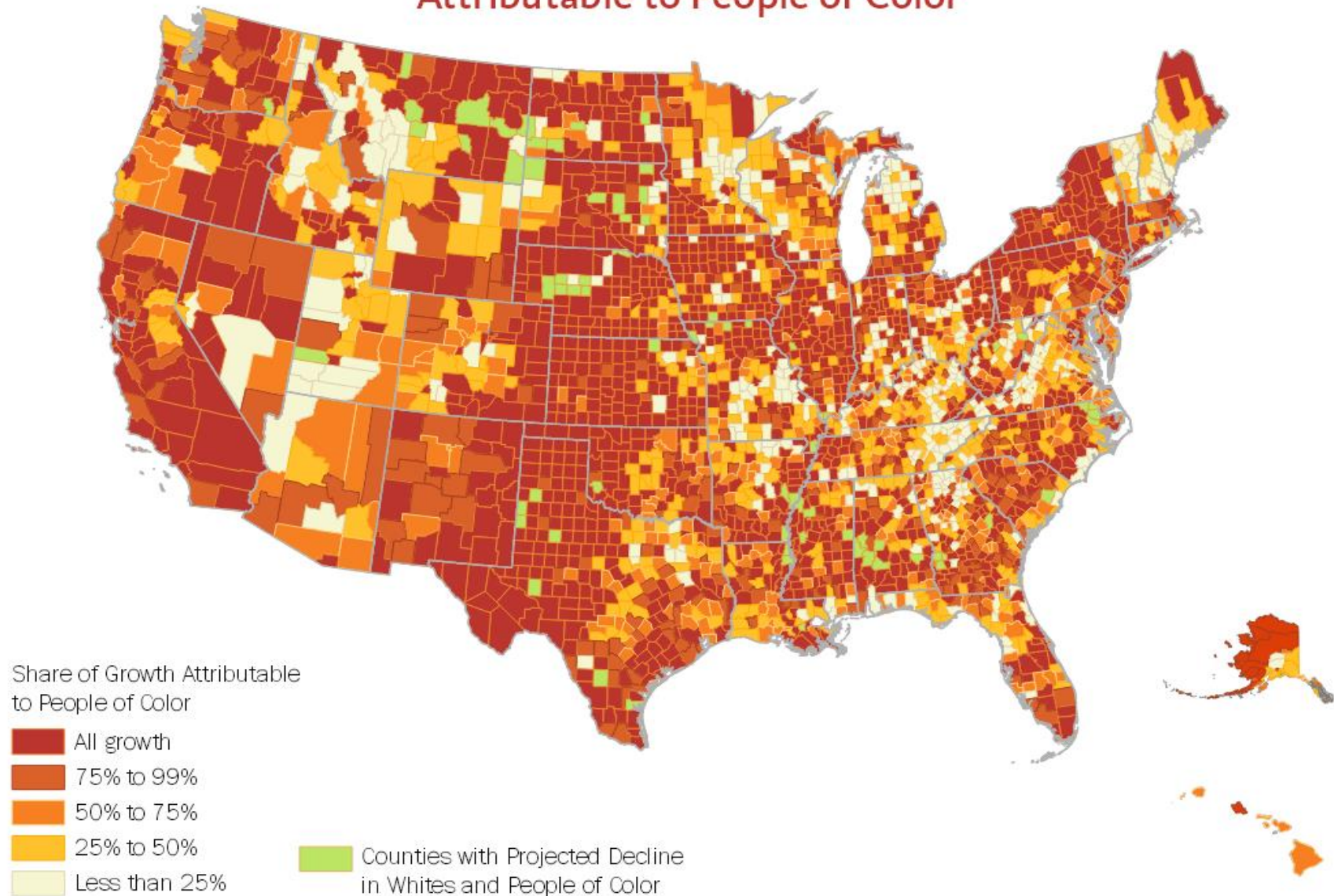
American will be Majority People-of-Color Nation by 2043



Source: 1980-2010 decennial censuses; U.S. Census Bureau, 2012 National Population Projections.

The Face of America is Changing

Projected Population Growth from 2010 to 2040 Attributable to People of Color

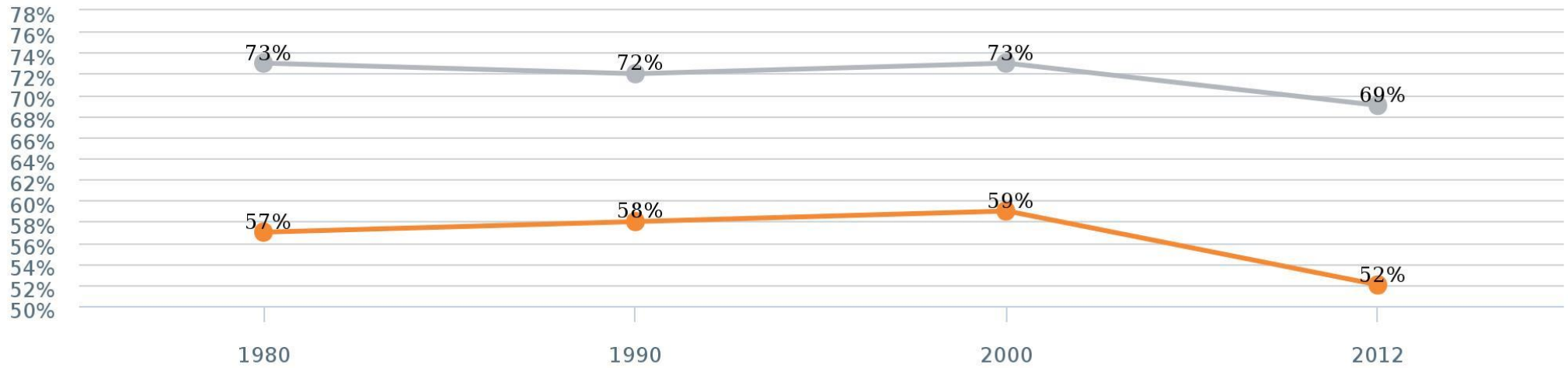


Map created by PolicyLink and the Program for Environmental and Regional Equity (PERE) using data from the 2010 Decennial Census, Woods & Poole Economics projections data (adjusted using 2010 census data), Census TIGER/Line, NHGIS, and ESRI.

What is Cost of Inequities to our Nation?

Share of workers earning at least \$15/hour by race/ethnicity: United States, 1980-2012

White
People of color

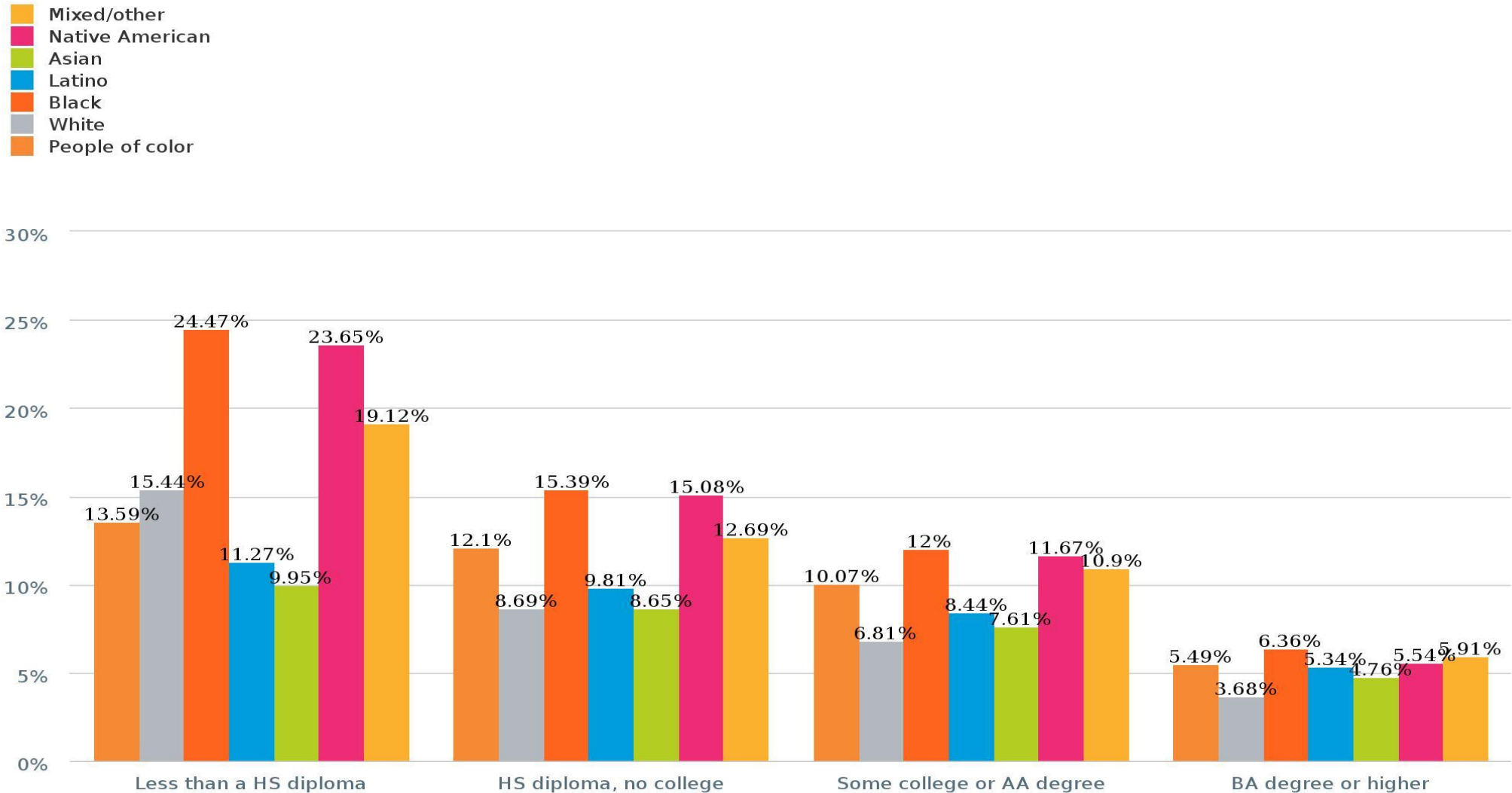


IPUMS

PolicyLink/PERE National Equity Atlas, www.nationalequityatlas.org

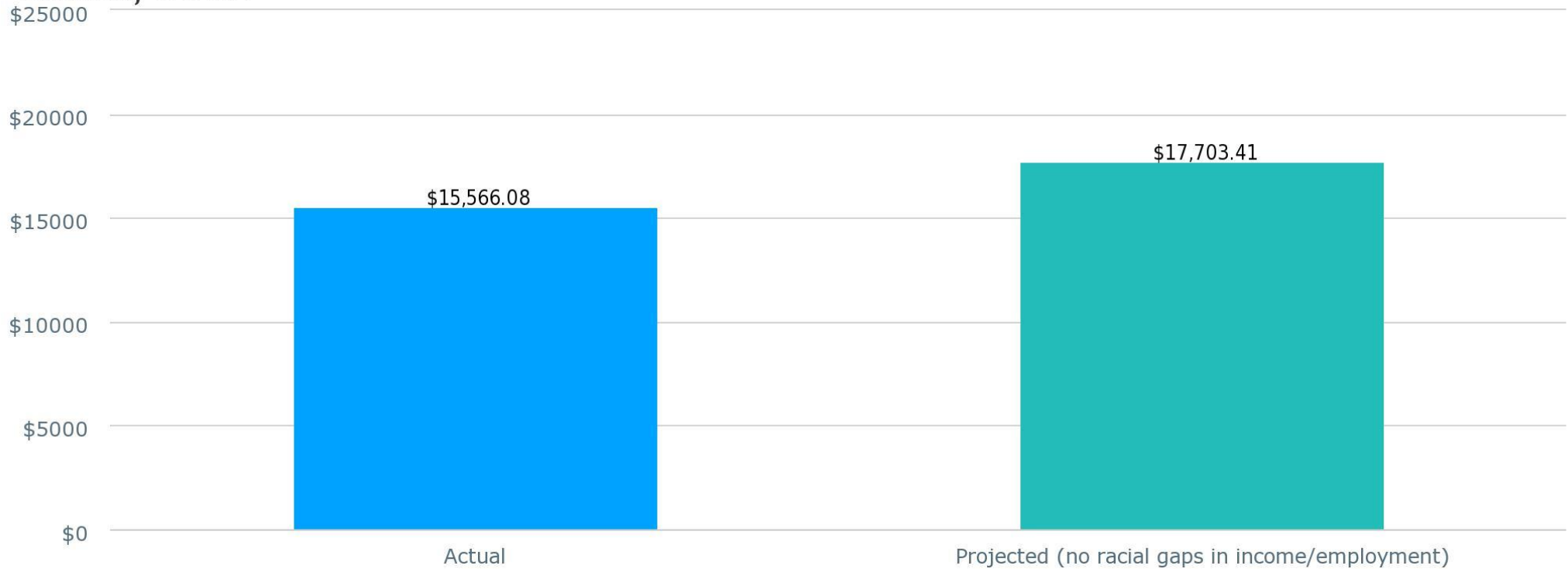
What is Cost of Inequities to our Nation?

Unemployment rate by race/ethnicity and education: United States, 2012



What is Cost of Inequities to our Nation?

Actual GDP and estimated GDP with racial equity in income (billions): United States, 2012



Bureau of Economic Analysis; IPUMS
PolicyLink/PERE National Equity Atlas, www.nationalequityatlas.org

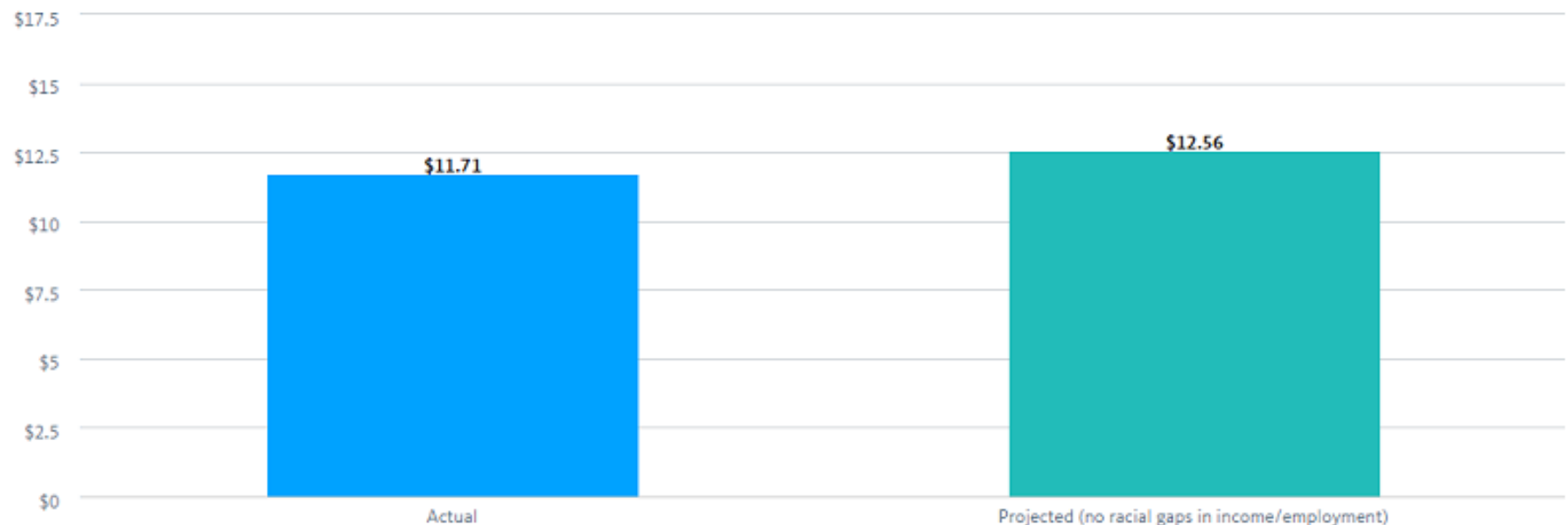
United States: In 2012, the economy would have been \$2,137.33 billion larger if there had been no racial gaps in income.

What is Cost of Inequities to our Nation?

GDP gains with racial equity 📍 Flint, MI Metro Area

Breakdown:

Actual GDP and estimated GDP with racial equity in income (billions): Flint, MI Metro Area, 2012

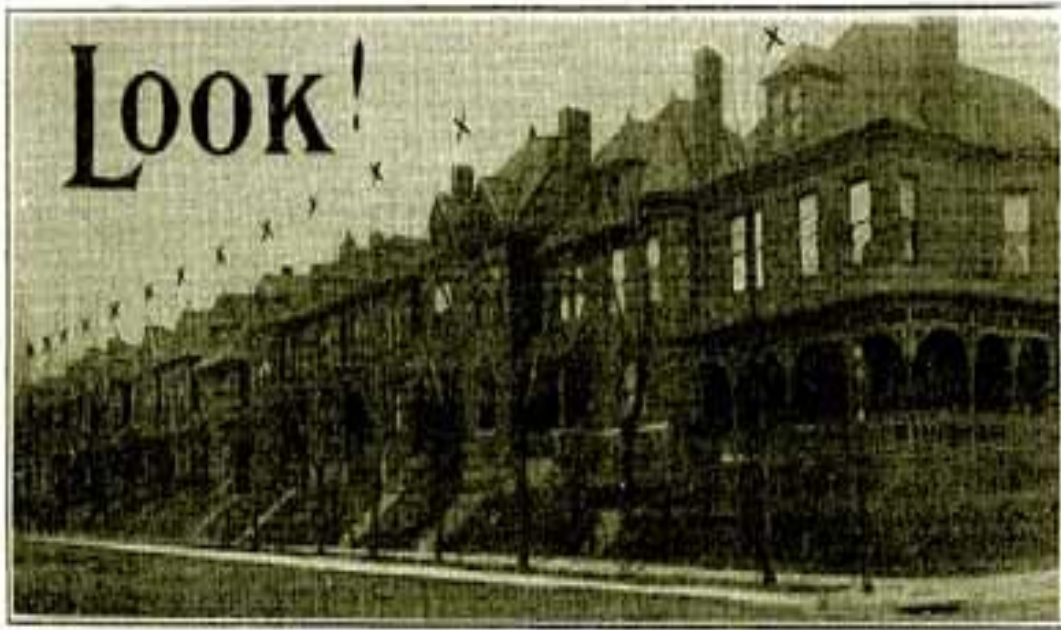


Bureau of Economic Analysis; IPUMS

Flint, MI Metro Area: In 2012, the economy would have been \$0.85 billion larger if there had been no racial gaps in income.

Putting it into Context

The Ghost of History



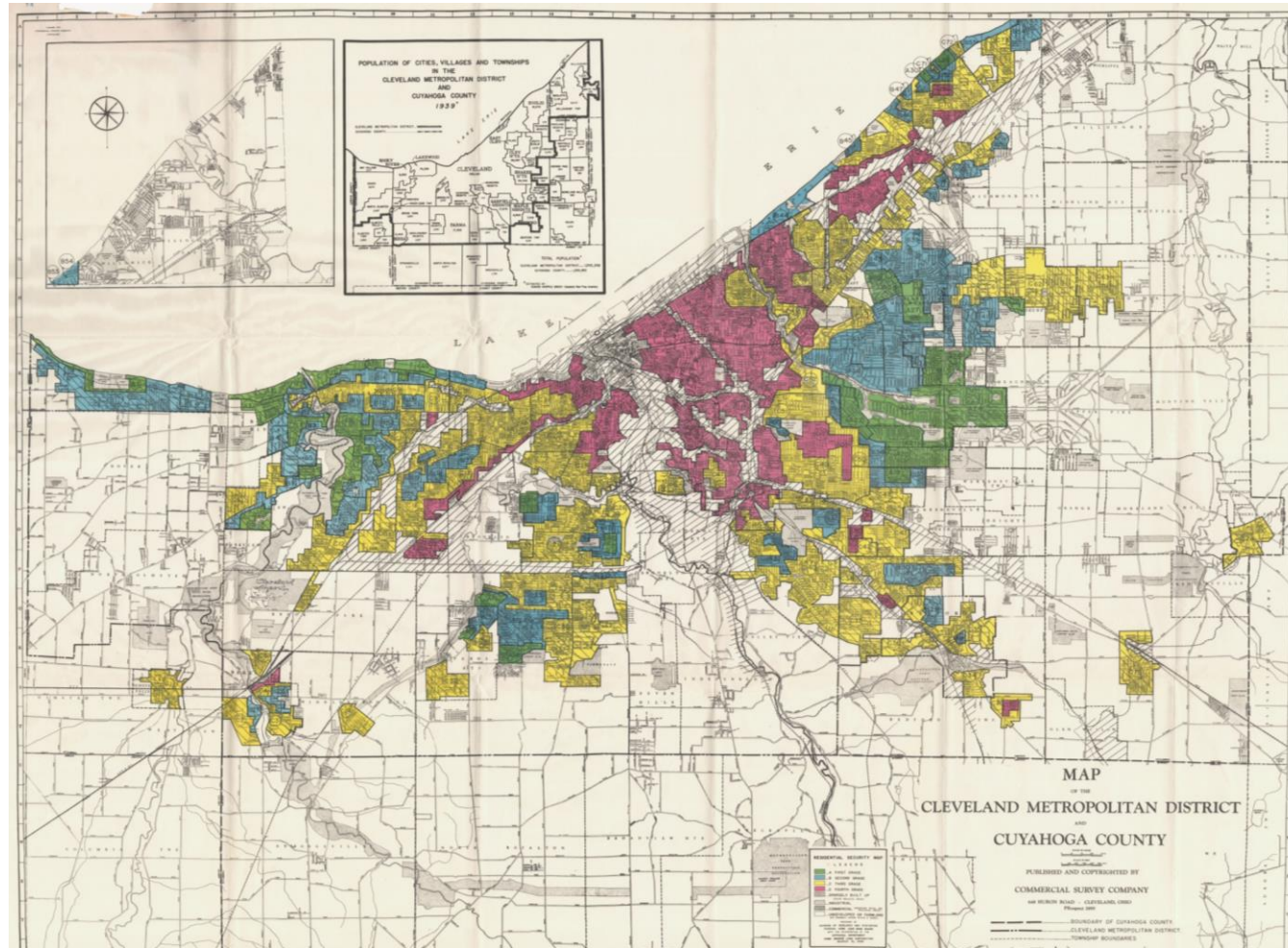
LOOK At These Homes NOW!

An entire block ruined by negro invasion. Every house marked "X" now occupied by negroes. ACTUAL PHOTOGRAPH OF 4300 WEST BELLE PLACE. SAVE YOUR HOME! VOTE FOR SEGREGATION!



Putting it into Context

The Ghost of History



red-line /red līn/ *v* : to deny loans to certain neighborhoods based on the race and/or ethnicity of its occupants. The impact of which is still evident in American cities today.

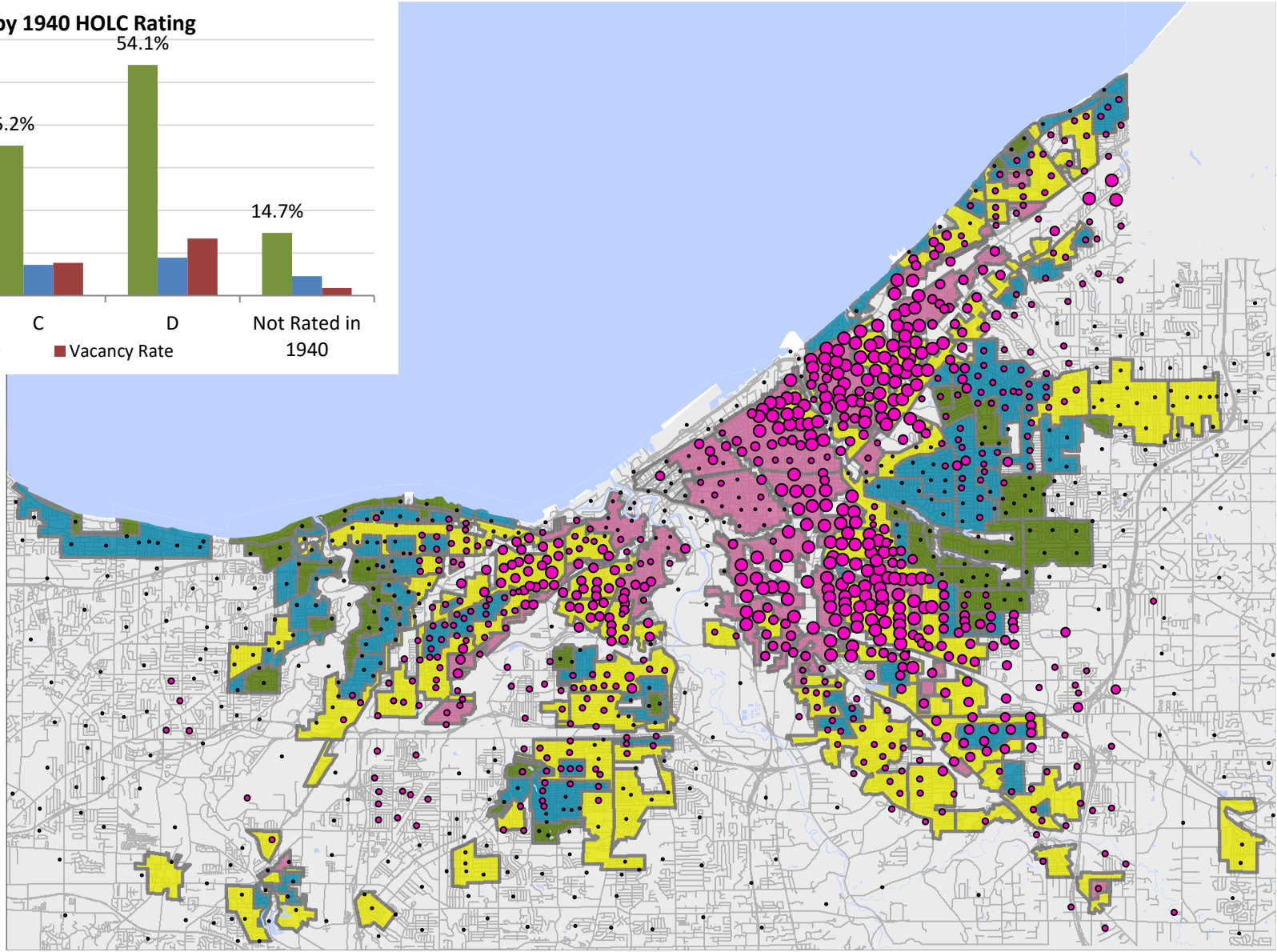
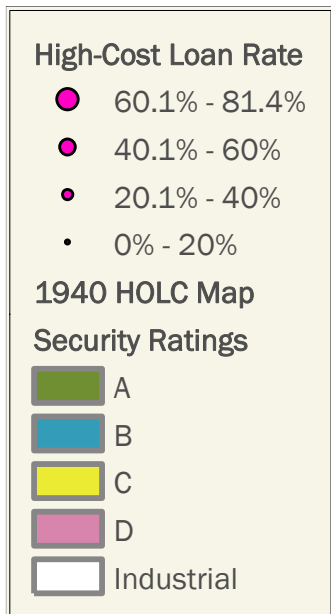
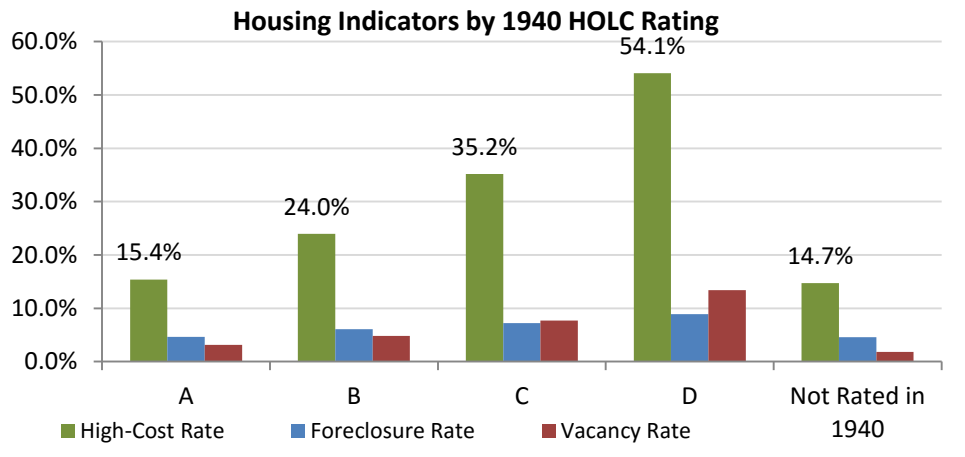
1. The **Home Owners' Loan Corporation (HOLC)** was created in the wake of the Great Depression to help refinance homes at risk of foreclosure. However, the HOLC is best known for creating residential security maps, better known as "redlining maps," to guide investment in American cities. These maps assigned grades of 'A' through 'D' to neighborhoods to indicate their desirability in terms of investment. Black and Immigrant neighborhoods were often given grades of 'C' or 'D', resulting in little or no access to mortgage insurance or credit for decades. Though the HOLC was discontinued in 1951, the impact of disinvestment as a result of redlining is still evident in many American cities today.



Putting it into Context

Not Really Ghosts - History Continues Today

Redlining & Recent Subprime Lending in Cleveland

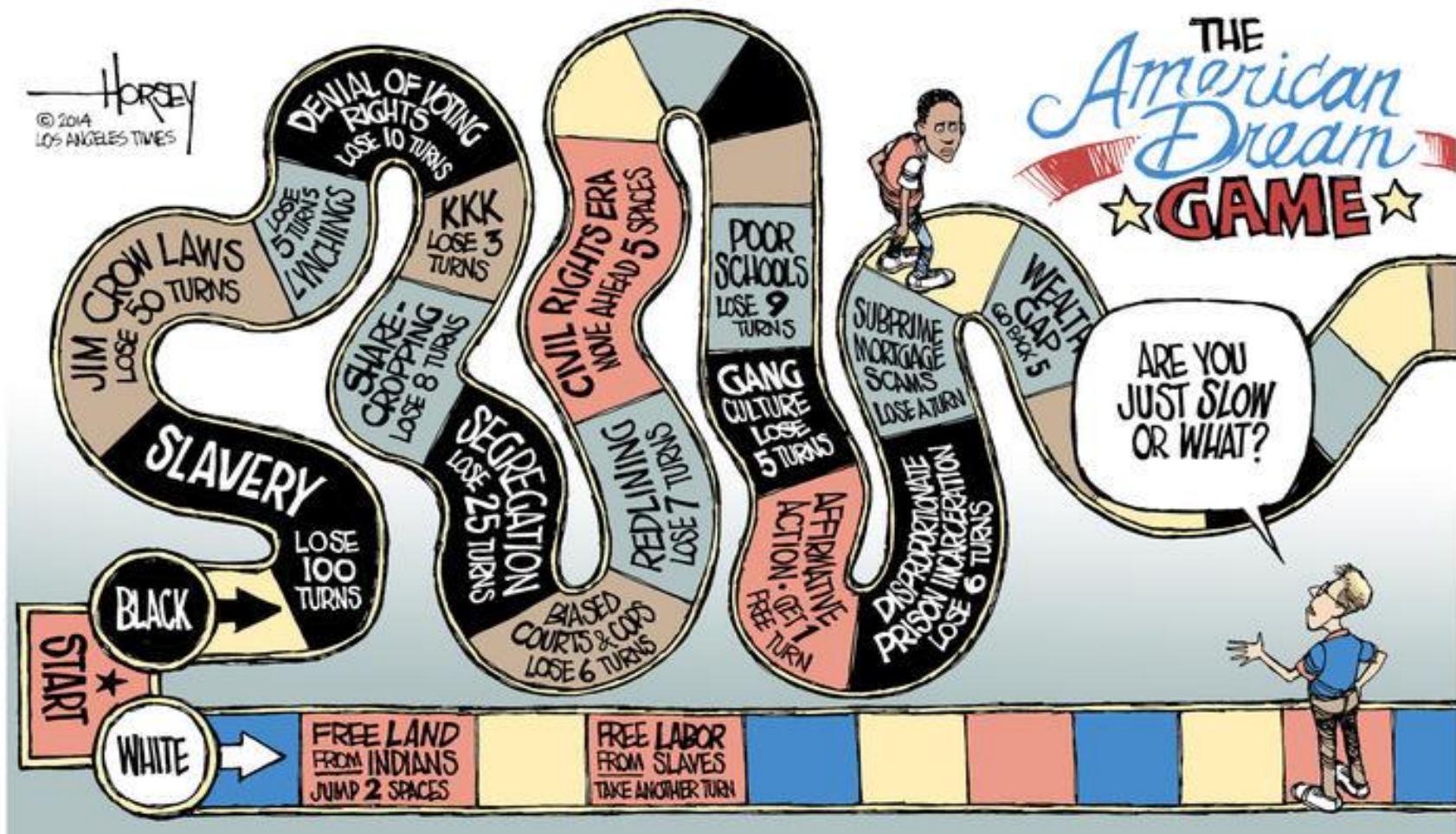


What does community history tell us?



Putting it into Context

Not Really Ghosts - History Continues Today



Source: David Horsey / Los Angeles Times

Why equity is important for the nation

- The face of America is changing.
- Yet racial and income inequality is high and persistent.
- The nation is bouncing back from the recession – but the bounce back is uneven. Those suffering the most are recovering the least.
- Strong communities of color are necessary for America's economic growth and prosperity.
- The way forward is an equity-driven growth model.

Government's Responsibility to Foster Equitable Communities for All of Its Residents

“We shall seek social justice by working to expand choice and opportunity for all persons, *recognizing a special responsibility to plan for the needs of the disadvantaged and to promote racial and economic integration.* We shall urge the alteration of policies, institutions, and decisions that oppose such needs.”

Part One the American Institute of Certified Planners Code of Ethics, “Our Overall Responsibility to the Public,” section F

Importance of Involving Underrepresented Populations

Consequences of.....



Partners not Participants – Getting Equity Results

We really do want to help...



Last time somebody came by here to help...



Gathering information vs Engagement

Community engagement is the process of working collaboratively with **community** groups to address issues that impact the well-being of those groups. Activities that help firms engage the **community** include credible and transparent reporting, town hall meetings and collaborative decision making.

[Community Engagement Definition from Financial Times ...](#)

Community engagement refers to the process by which **community** benefit organizations and individuals build ongoing, permanent relationships for the purpose of applying a collective vision for the benefit of a **community**.

[Community engagement - Wikipedia](#)

Achieving Equity –Community as Partners not Participants

Community Engagement and Inclusive Governance

Community engagement, partnerships and inclusive governance are necessary vehicles towards achieving equity, but in and of themselves, do not achieve equity.

Achieving equity requires *shared decision-making* that is rooted in transparency with commitment to changing inequitable policies and practices



Principles for Successful Community Engagement

- **Understand** History and Current Context
- **Foster** meaningful inclusion and partnerships
- **Build capacity** of communities to engage
- **Prioritize** community knowledge and concerns
- **Target/share resources** to support ongoing engagement
- **Facilitate** mechanisms that encourage mutual learning

*PolicyLink Community Engagement Guide: <http://www.policylink.org/find-resources/library/community-engagement-guide-for-sustainable-communities>

Acknowledge and pay attention to difference

- **Disabilities**
- Varying Linguistics
- **Age**
- **Prioritize** community knowledge and concerns
- **Target/share resources** to support ongoing engagement
- **Facilitate** mechanisms that encourage mutual learning

*PolicyLink Community Engagement Guide: <http://www.policylink.org/find-resources/library/community-engagement-guide-for-sustainable-communities>

Talking about Race and Inequality

- Productive conversations about race and inequality are difficult to have
- Focus on building understanding of historic and systemic nature of racial disparities
- Acknowledge that increasing opportunity for all will help strengthen country overall
- Promote importance of connectivity and intentionality



A large crowd of people, many wearing red shirts, is gathered on a city street for a protest. They are holding a large white banner that reads "STOP SEPARATING OUR FAMILIES" and "TWO MILLION DEPORTED UNDER PRESIDENT TRUMP". The crowd is diverse in age and ethnicity. Some individuals are holding smaller signs, including one that says "CITIZENSHIP YES! Deportation NO!" and another that says "NO MAS DEPORTACIONES". The Washington Monument is visible in the background under a clear blue sky.

STOP SEPARATING OUR FAMILIES
TWO MILLION DEPORTED UNDER PRESIDENT

Building and Maintaining Trust

- Transparency is a MUST
- Don't take it personal
- Don't be defensive
- Acknowledge harms
- Don't make promises you can't keep
- Be clear about how input will be used to influence decision-making
- Respect community experience, leadership, resilience, fortitude and tenacity

Building a Successful Engagement Process

- **SHARE RESOURCES**
- Convene local leaders to develop partnerships and a targeted participation strategy
- **Meet with and invite a diversity of groups representing communities of color and low-income communities**
- Make the case for the potential benefits of engagement
- **Defer leadership - ask leaders from these organizations to facilitate meetings**
- Set goals agreed on goals to ensure a critical mass of people from are represented
- **Approach each and every project with the goal of building and leaving capacity in the community**

They Already Know the Community!

Civil rights organizations: NAACP, Urban League, ACLU, and culturally specific focused groups and organizations.

Youth and Senior serving organizations that target underserved populations

Faith-based organizations: interfaith networks, key neighborhood churches and mosques, and faith-based community services

Community based organizations: neighborhood and social services and environmental justice organizations; community development corporations, other issue focused organizations.

Public health organizations: community or regional associations focused on health

Workforce development & labor organizations: job training organizations, groups that work with incarcerated and formerly incarcerated.

Neighborhood led organizations visioning and planning; small business membership and other neighborhood run and led membership organizations

*******Test for equity** – who is leading and setting the agenda in and for these organizations?

Example: Twin Cities

from Engagement to Inclusive Governance

Project: Corridors of Opportunity

- Formed a Community Engagement Team (CET) of 3 community-focused intermediaries to design engagement strategies
- CET worked with the Policy Board to broaden membership to include equity leaders in the decision-making
- Implemented a sub-granting for funding community-based organizations to conduct engagement, outreach, visioning, and planning activities.
- Developed implementation structure with broader equity leader participation through relationships cultivated during engagement phase

*PolicyLink Community Engagement Guide: <http://www.policylink.org/find-resources/library/community-engagement-guide-for-sustainable-communities>

Example: Greater Kansas City from Engagement to Inclusive Governance Project: Creating Sustainable Places

- Invited equity partners onto decision-making body
- Supported capacity-building of equity partners to engage in sustainability planning
- Made small grants to community partners and funded neighborhood pilot planning projects
- Developed and adopted equity “lens” to guide the incorporation of equity outcomes in each component of the final/adopted plan
- Creating peer exchange with regional equity advocates
- Worked to develop a tailored community engagement model along transportation corridors and across region
- Supported the development of a regional equity network geared to inform and influence the process

*PolicyLink Community Engagement Guide: <http://www.policylink.org/find-resources/library/community-engagement-guide-for-sustainable-communities>

Gathering Input Not Enough

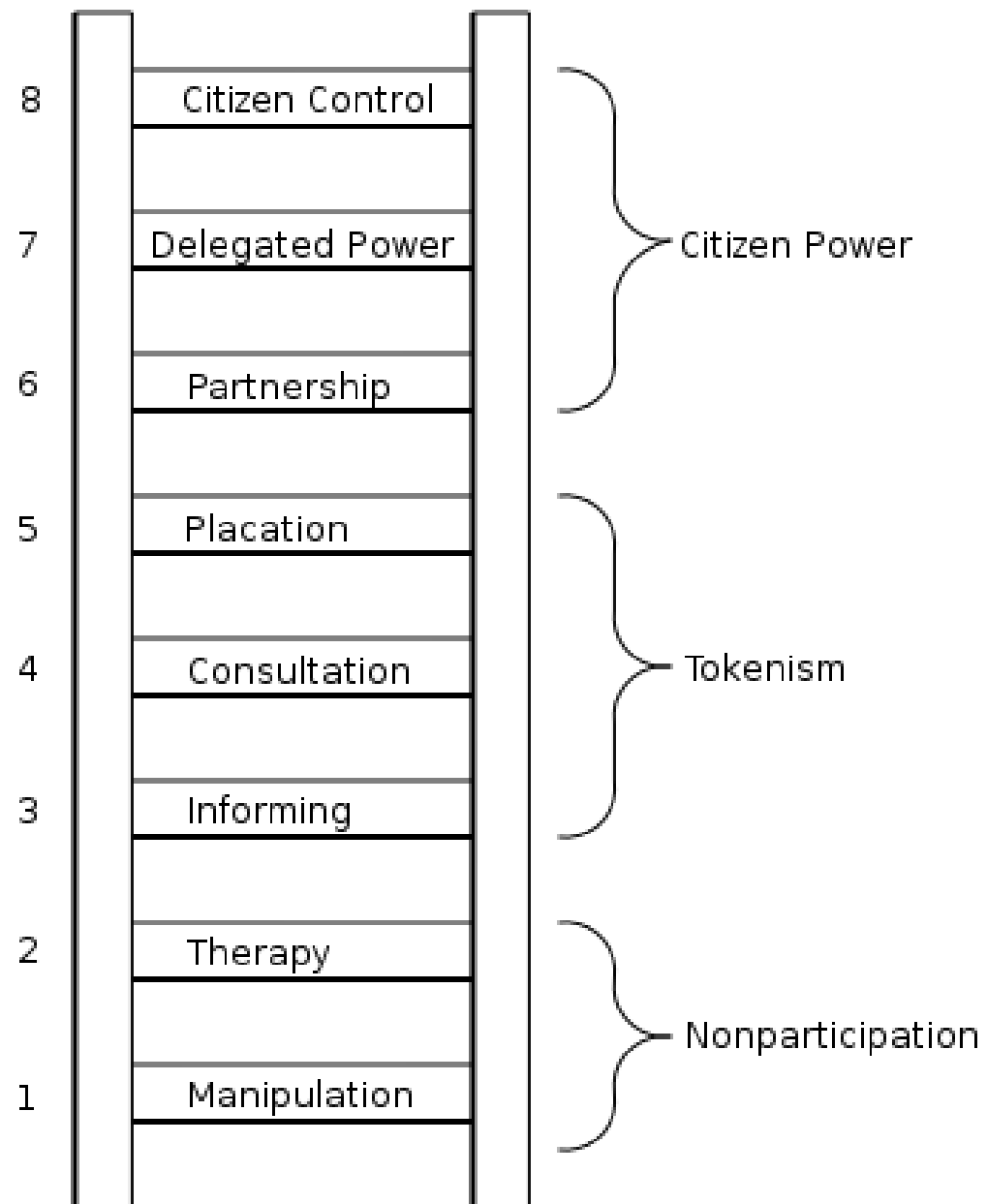
Data (gathering input) What is going on here? Where do racial and income disparities exist?



Deliberation Ground truth the data - How did we get here?
What does this data mean?

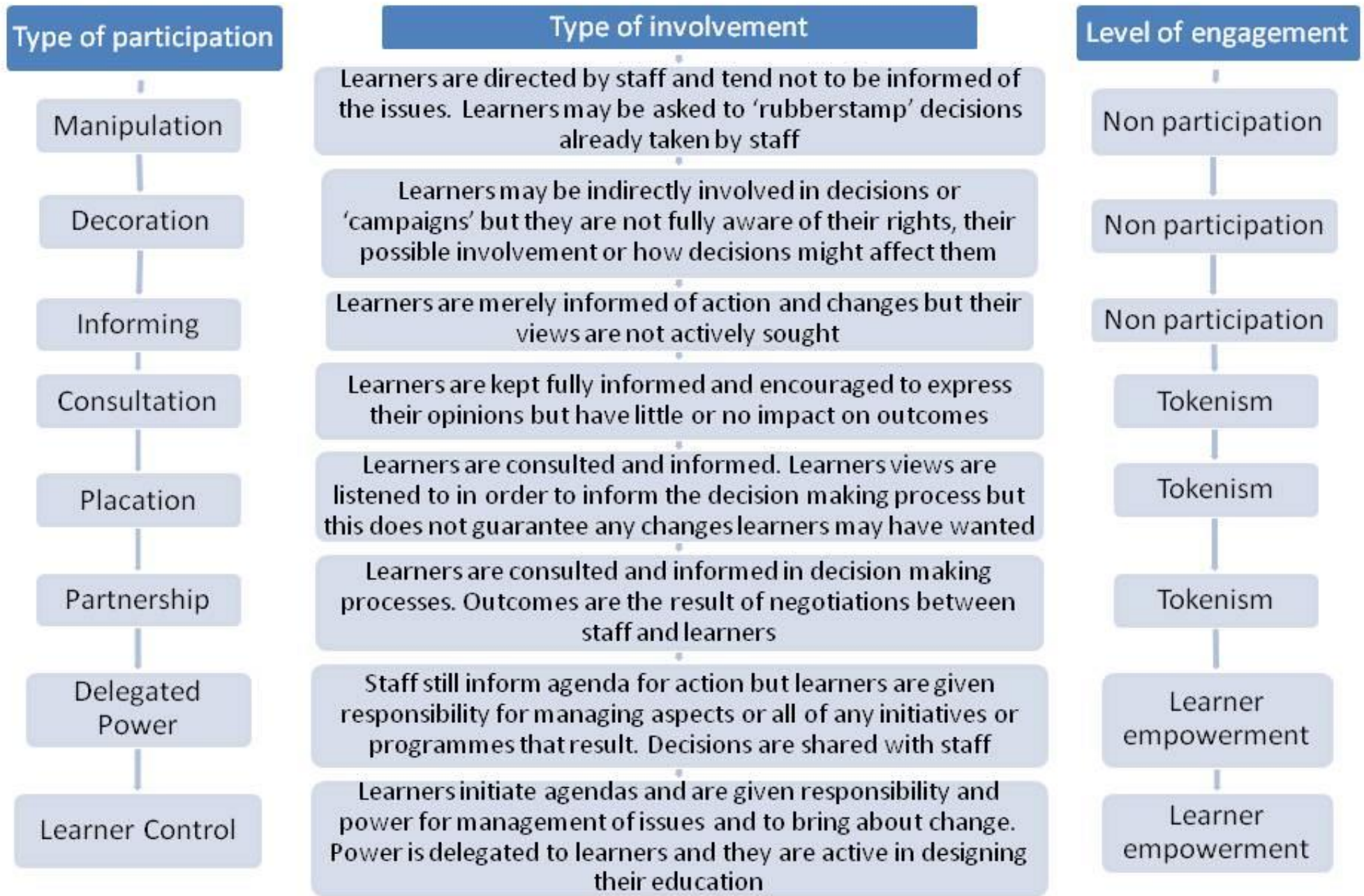


Decision Making How does this information inform decisions? Who needs to weigh-in on/make decisions?



Your Engagement Agenda

‘LADDER’ OF PARTICIPATION



Your Engagement Agenda

King County Model for Community Engagement

Levels of Community Engagement				
We inform	We consult	We engage in dialogue	We and community work together	Community directs action
Characteristics of Engagement				
<ul style="list-style-type: none"> Primarily one-way channel of communication One interaction Term-limited to event Addresses immediate need of county and community 	<ul style="list-style-type: none"> Primarily one-way channel of communication One to multiple interactions Short to medium-term Shapes and informs county programs 	<ul style="list-style-type: none"> Two-way channel of communication Multiple interactions Medium to long-term Advancement of solutions to complex problems 	<ul style="list-style-type: none"> Two-way channel of communication Multiple interactions Medium to long-term Advancement of solutions to complex problems 	<ul style="list-style-type: none"> Two-way channel of communication Multiple interactions Medium to long-term Advancement of solutions to complex problems
Strategies				
Media releases, brochures, pamphlets, outreach to vulnerable populations, ethnic media contacts, translated information, staff outreach to residents, new and social media	Focus groups, interviews, community surveys	Forums, advisory boards, stakeholder involvement, coalitions, policy development and advocacy, including legislative briefings and testimony, workshops, community-wide events	Co-led community meetings, advisory boards, coalitions, and partnerships, policy development and advocacy, including legislative briefings and testimony	Community-led planning efforts, community-hosted forums, collaborative partnerships, coalitions, policy development and advocacy including legislative briefings and testimony

Getting Beyond Engagement: Creating inclusive governance structures

Key Questions:

To ensure equity outcomes: what additional people and resources does our advisory and/or decision-making body need to create and sustain an inclusive governance system?

If the team does not currently have the people and resources, what steps need to be taken to bring those people and resources into the process?

Inclusive Governance	Establish systems of engagement
	Resource community participation
	Translate input into results
	Establish governance inclusion goals
	Staff agencies for strong community liaison
	Appoint representatives to boards & commissions

RECOMMENDATIONS

More than education and jobs....

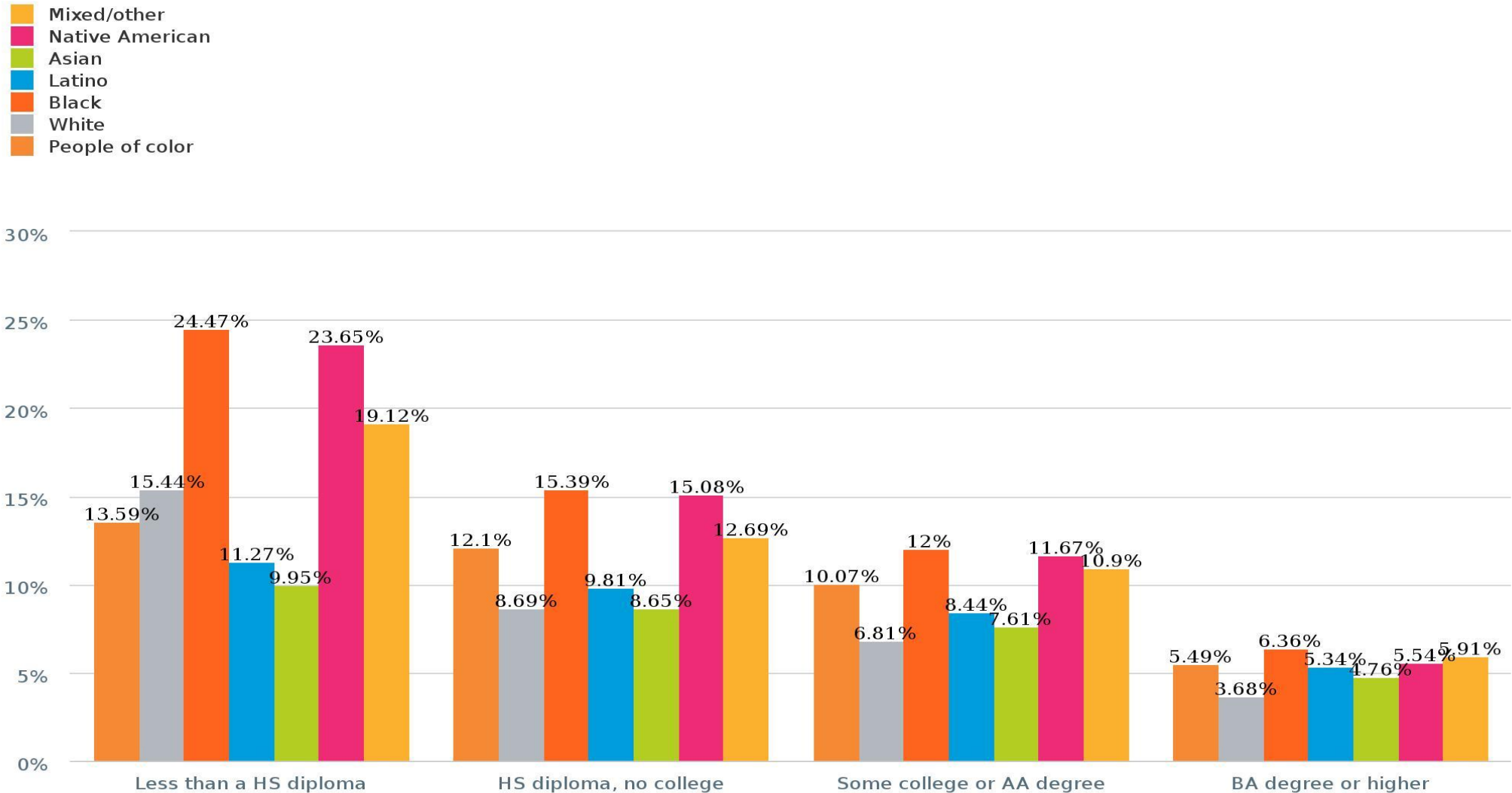
Reduce racial barriers and increase access to opportunity

*Implicit Bias
Insights as
Preconditions
to Structural
Change*

White/ Pleasant	Black/ Unpleasant	Black/ Pleasant	White/ Unpleasant
Shanice		Happiness	
Press E to classify as White or Pleasant or I to classify as Black or Unpleasant		Press E to classify as Black or Pleasant or I to classify as White or Unpleasant	

What is Cost of Inequities to our Nation?

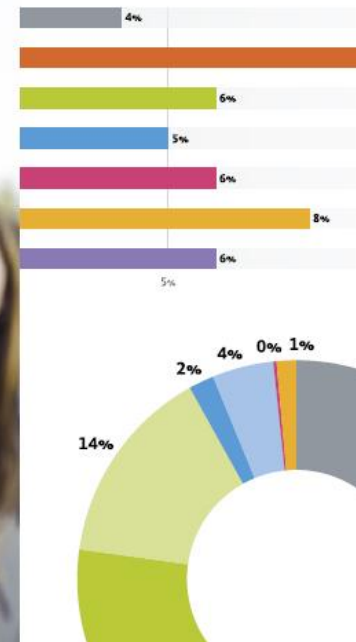
Unemployment rate by race/ethnicity and education: United States, 2012



Data Driven Decision Making

Visit the National Equity Atlas at
<http://nationalequityatlas.org/>

**Data to Build
an Equitable
Economy**



Resources

www.PolicyLink.org

Library | policylink.org x

www.policylink.org/FindResources/Library

our policing and criminal justice systems — including meaningful oversight of law enforcement, accountability, an end to the criminalization of communities of color, and investments beyond federally-sponsored tanks and additional...
[| More >](#)

Categories: [Equitable Economy](#)
[Webinars](#) | 2015

Building an Equitable Retirement System for the 21st Century

Featured Speakers:



- **Laure Sullivan**, Senior Research Associate, Institute on Assets and Social Policy (IASP)
- **Ramsey Alabi**, VP for Economic Security Initiative, National Council on Aging
- **Jody Blylock**, Policy Associate, Financial Empowerment Policy Project, Illinois Asset Building Group and Heartland Alliance
- **Alexandre Bastien**, Senior Associate, PolicyLink (moderator)

All families hope for lasting financial security, but today many families in the U.S. struggle to make ends meet, let alone prepare for their financial future. Looking ahead towards older age, families hope to pay off debts, give their children a secure start in life, and build a nest egg for retirement. However, these basic aspirations prove elusive for many, placing long-term financial...
[| More >](#)

Categories: [Health Equity and Place](#)
[Webinars](#) | 2015

Creating Equitable Food Systems with the Healthy Food Financing Initiative

June 9, 2015
11-12PM PST / 2-3PM EDT

PolicyLink   Supporting the growth of equity

Across the country, the federal Healthy Food Financing Initiative (HFFI) is working to increase access to healthy food in low income communities and communities of color. The program is supporting food retailers that are increasing equity by improving regional food systems, creating jobs, and strengthening local economies.

This webinar will highlight how healthy food projects supported by...
[| More >](#)

Categories: [Equitable Economy](#)
[Webinars](#) | 2015

Making Regional Equity a Reality
EQUITY 15



Thank You!

Questions:

Sarita Turner, Associate Director, PolicyLink | sarita@policylink.org