

The Fourth Regional Plan for the New York Metropolitan Area

March 29, 2018

Mandu Sen, Regional Plan Association

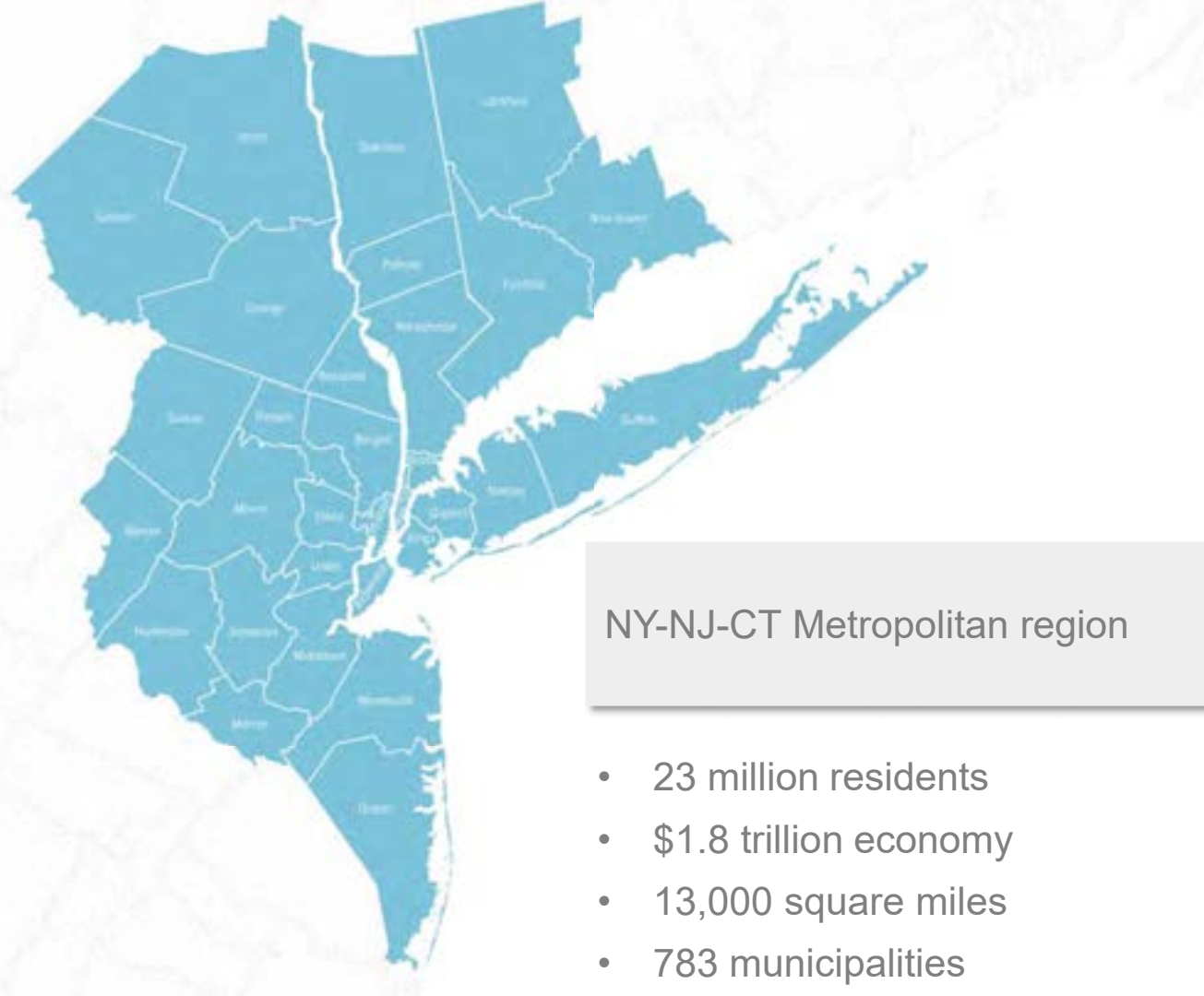
fourthplan.org



About Regional Plan Association

For nearly 100 years
RPA has developed
long-range plans that
have shaped the
growth of the New
York metropolitan
area.

Plans are shaped by in-house staff in collaboration with civic groups, private and public sectors and academia.



NY-NJ-CT Metropolitan region

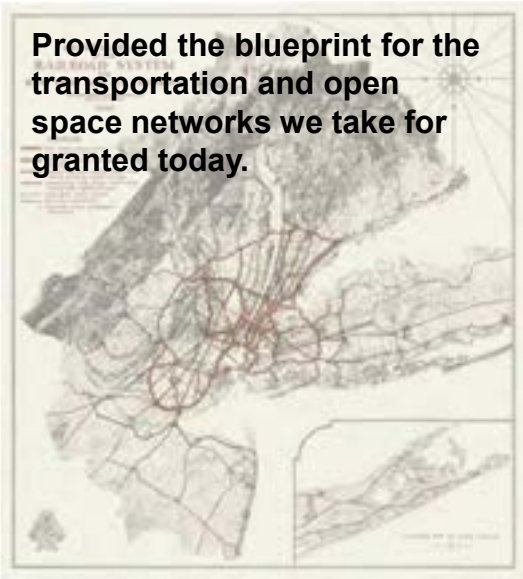
- 23 million residents
- \$1.8 trillion economy
- 13,000 square miles
- 783 municipalities

1929

The First Regional Plan



Provided the blueprint for the transportation and open space networks we take for granted today.

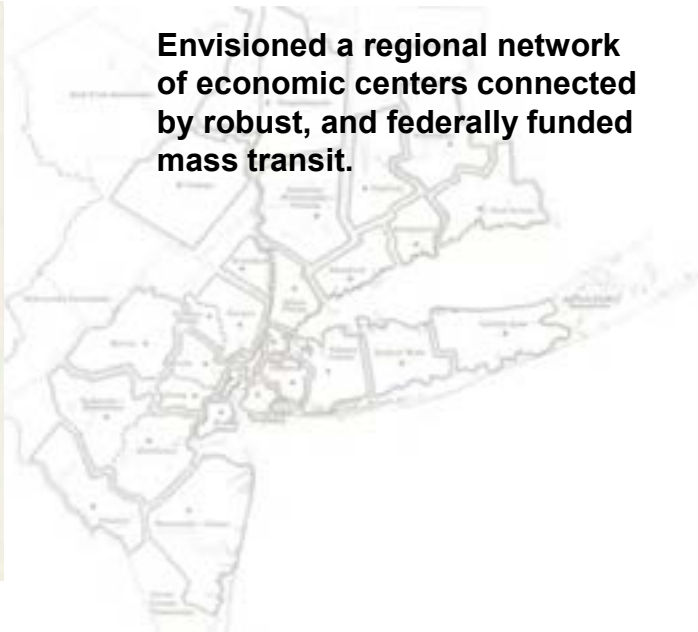


1968

The Second Regional Plan



Envisioned a regional network of economic centers connected by robust, and federally funded mass transit.



1996

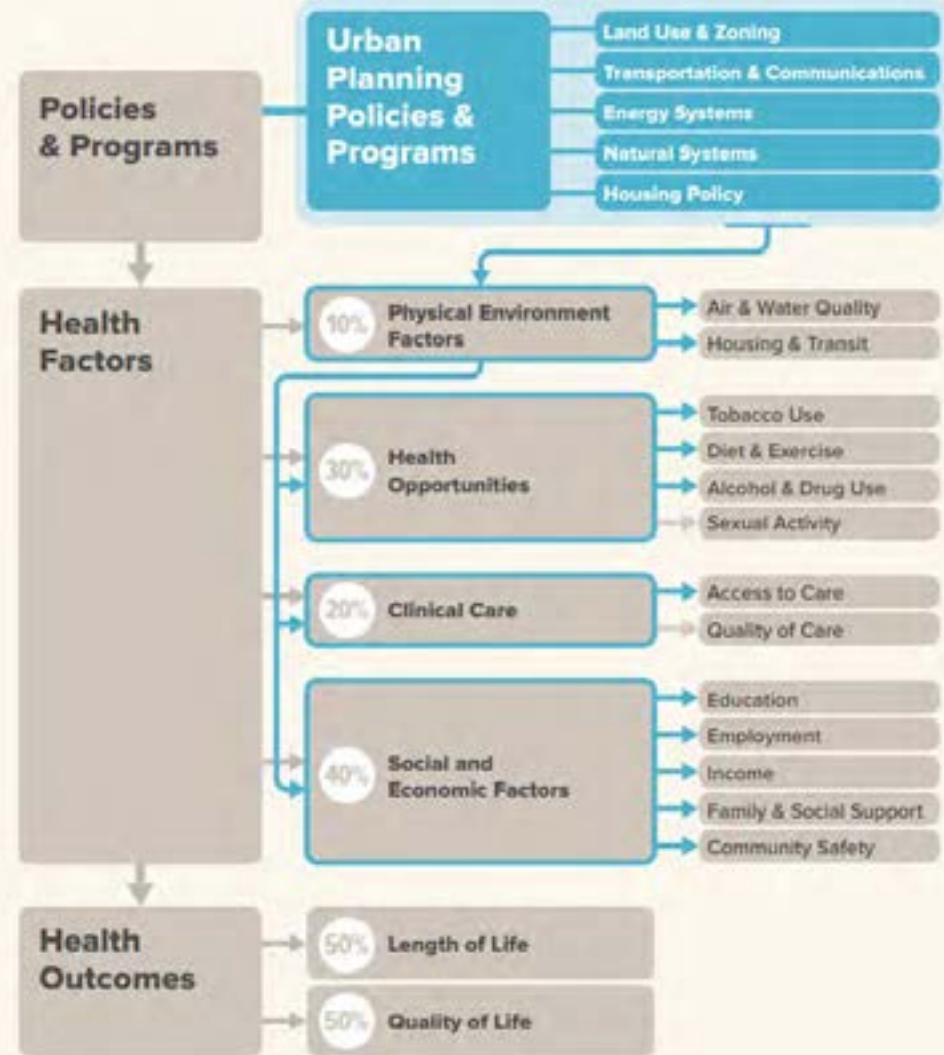
The Third Regional Plan



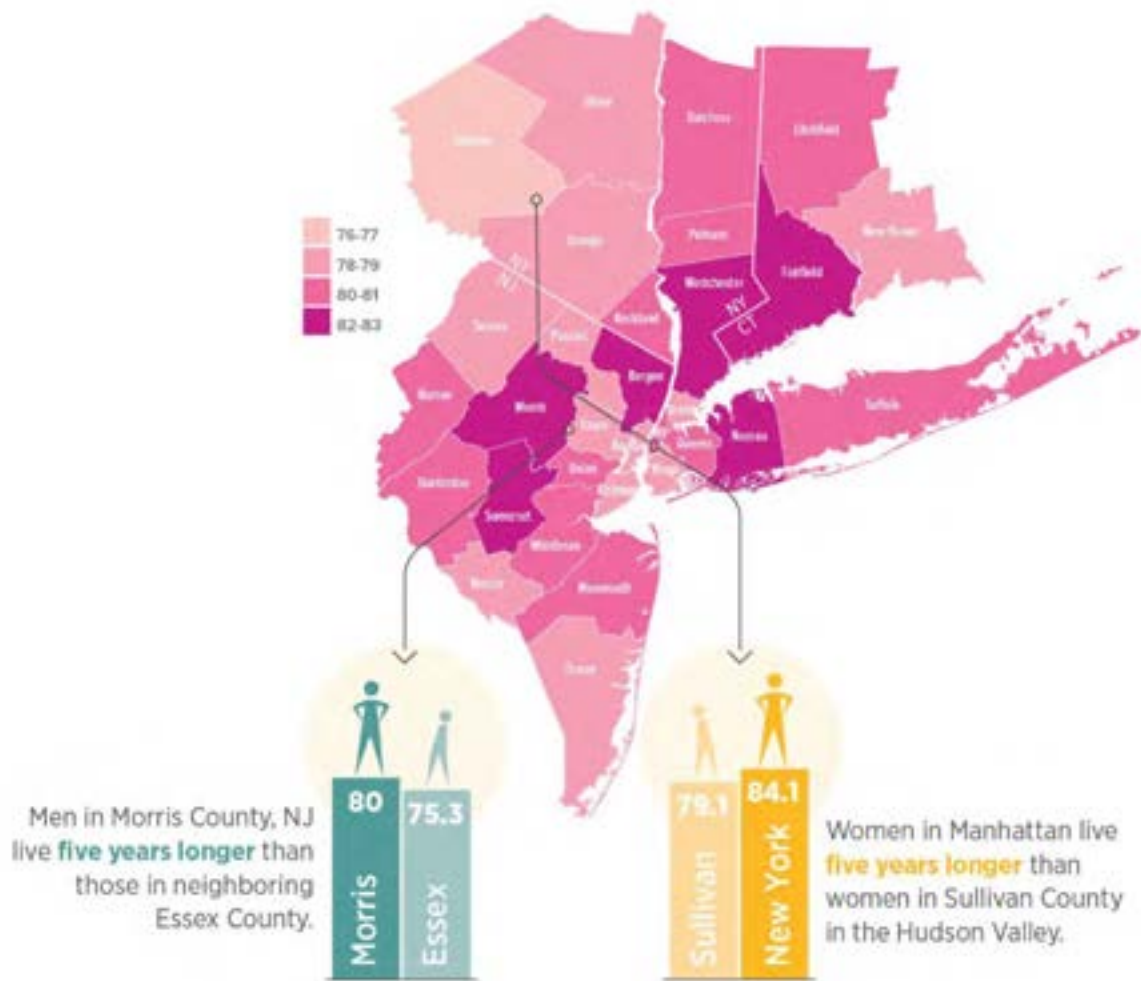
Called for renewed investment in New York's faltering economy and infrastructure.



What influences health?



Where you live defines how long you live



Reconnecting urban planning and public health

1926

“Regional planning has the same object as city planning, namely, to secure health, order, safety, convenience, and general welfare, in connection with the physical growth of communities. Health comes first in order of importance...”

Thomas Adams, lead author of RPA's first regional plan

2017

“By 2040, everyone in the tri-state region should live longer and be far less likely to suffer from mental illness or chronic diseases such as asthma, diabetes or heart disease, with low-income, Black and Hispanic residents seeing the greatest improvements.”

Fourth Regional Plan for the New York metropolitan region

Making the Region Work for All of Us



Equity



Health



Prosperity



Sustainability

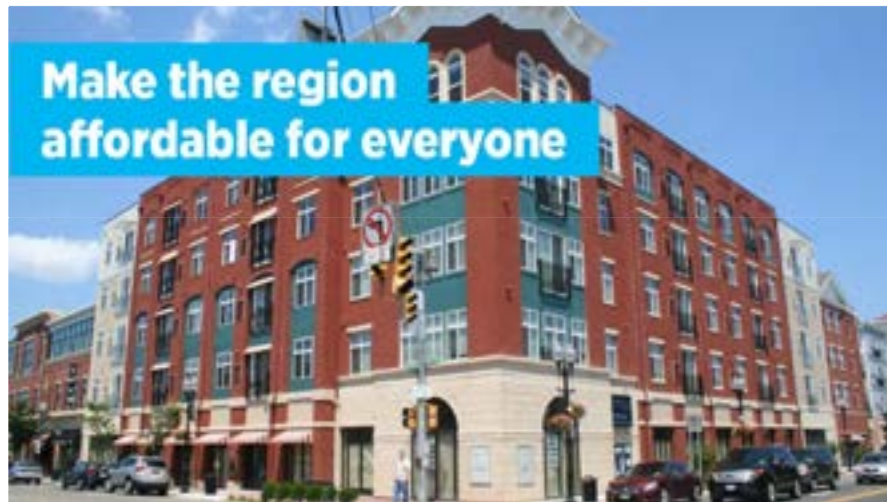
**Rise to the challenge
of climate change**



**Create a dynamic, customer-
oriented transportation system**



**Make the region
affordable for everyone**



**Fix the institutions
that are failing us**



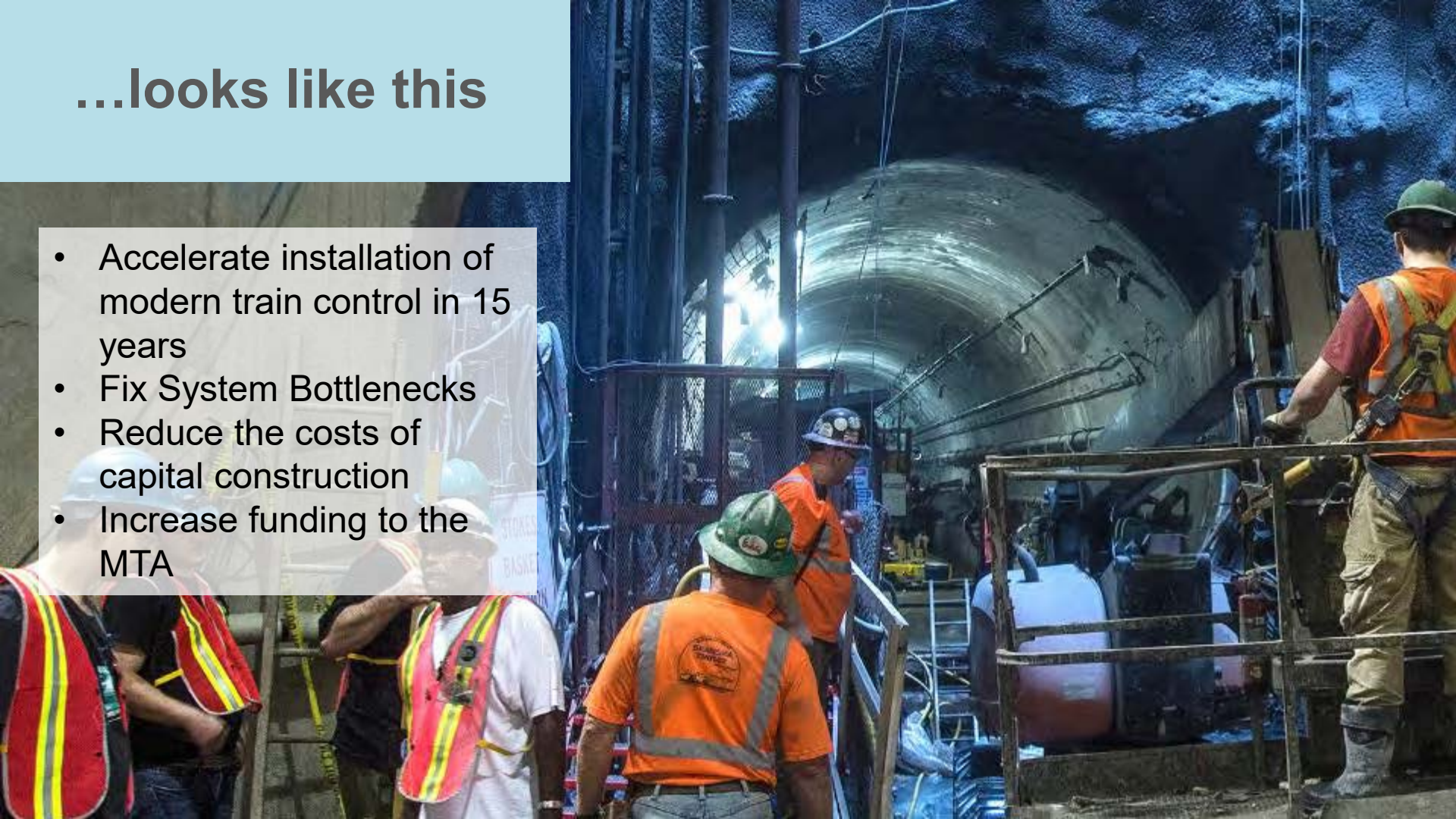


Solving THIS problem...

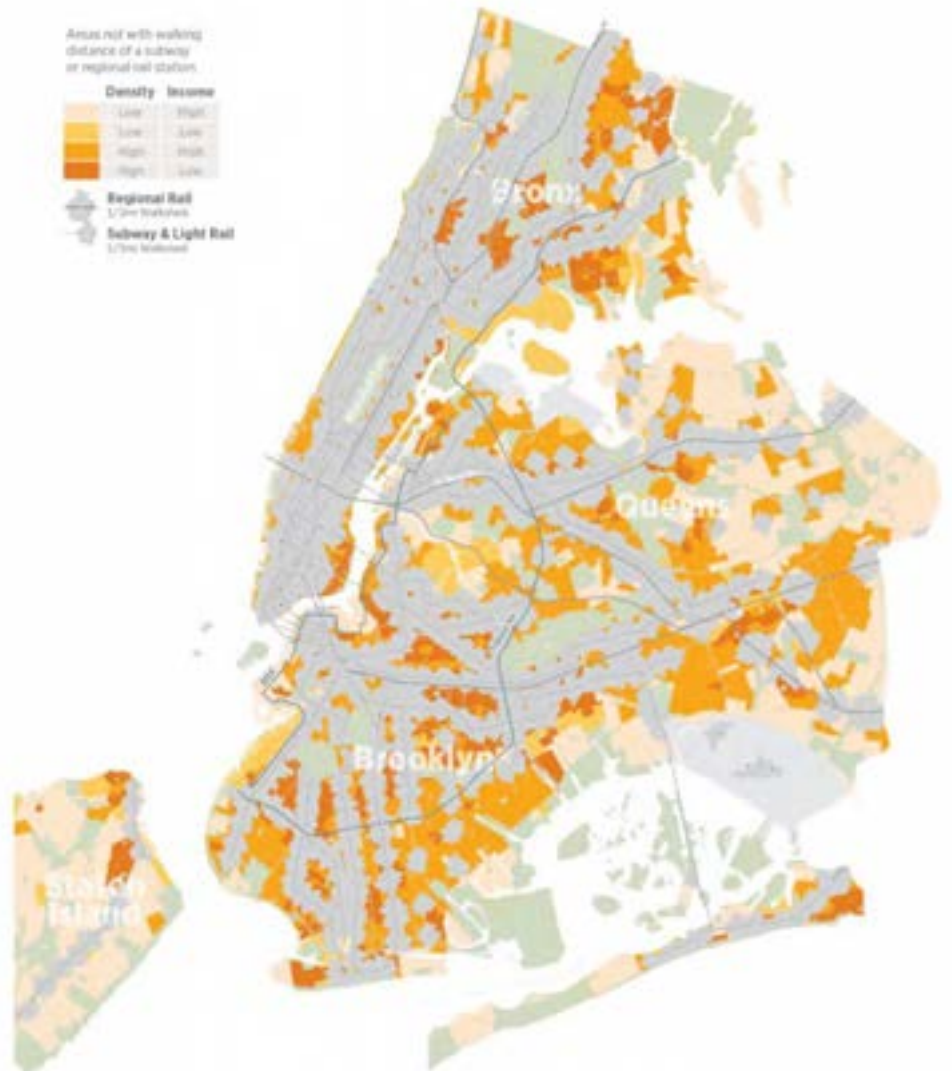


...looks like this

- Accelerate installation of modern train control in 15 years
- Fix System Bottlenecks
- Reduce the costs of capital construction
- Increase funding to the MTA



The city is full of neighborhoods that aren't served well by transit even though their densities justify it.



Expand the
subway to cover
underserved
areas of the City



Build the triboro line



But wait? Who will this development be for?

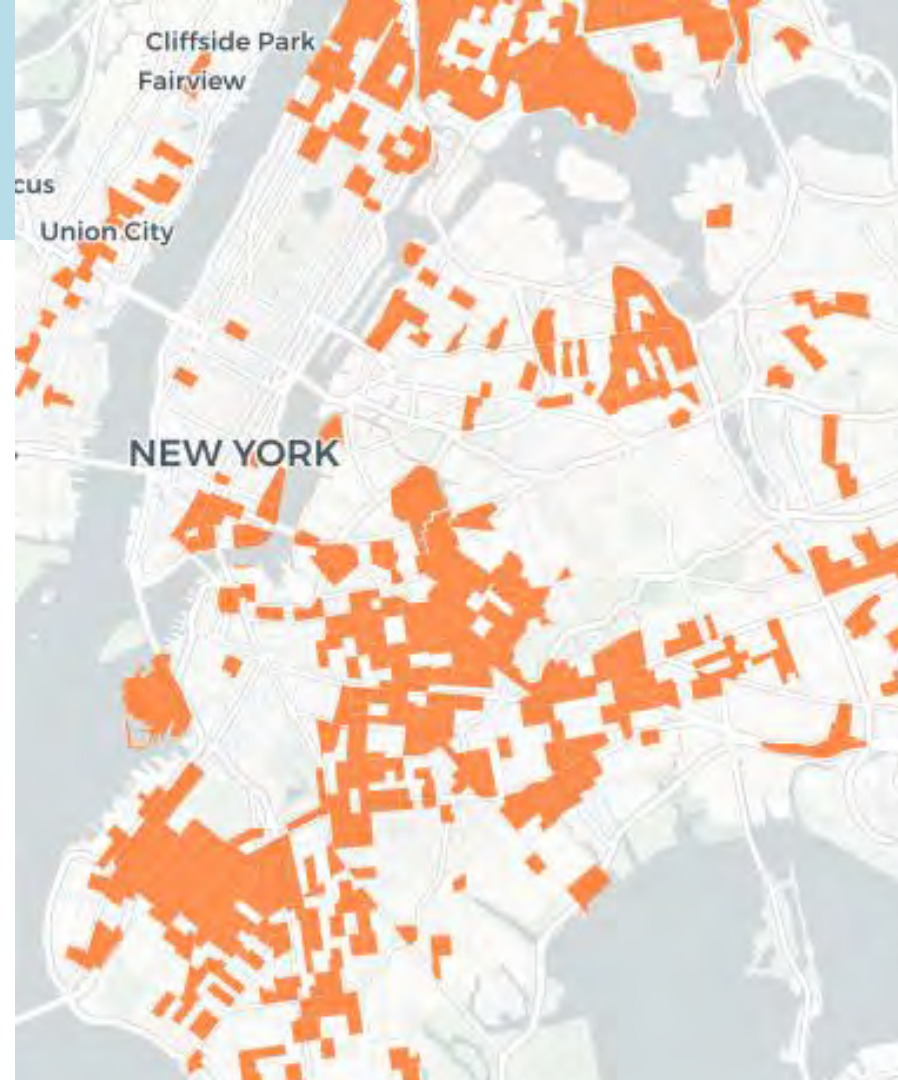
Displacement risk in NYC:

- 1.4 million households
- 400,000 unsubsidized very low income households (income below \$25K)
- 690,000 rent burdened households



Housing solutions

- Help people now: Invest in legal aid and healthy homes
- Unlock 'hidden' housing – pied-à-terre tax, accessory dwelling units and conversions, reform short term letting
- Target housing subsidies at those with highest needs
- Invest in public housing and community land trusts
- Reform planning process
- Regional approach



Decking over or burying highways



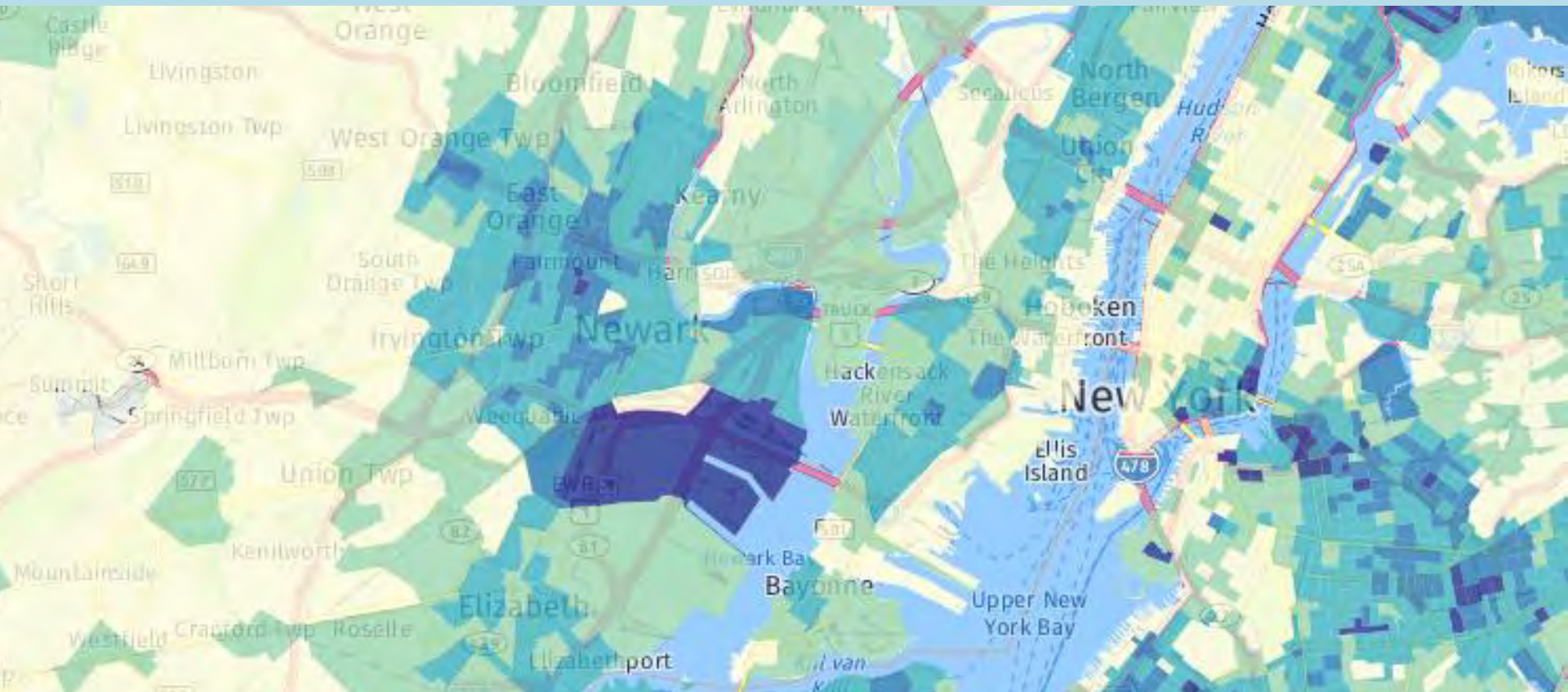
Improve goods
movement



Reduce greenhouse gas emissions



Regional approach to food policy



Cool our communities



**We also need
to reform the
process of
planning**



How you can get involved...

Follow us on social media

www.rpa.org



/regionalplan



@RegionalPlan



regional_plan

Join our membership program

www.rpa.org/donate

For more information, please contact
Christine Hsu, Manager of Special Events
& Individual Giving,
chsu@rpa.org or 917-546-4304.

