



**Socially  
Connected  
Communities  
Network**

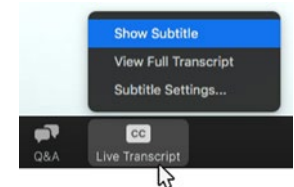
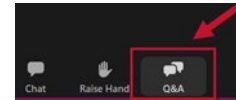
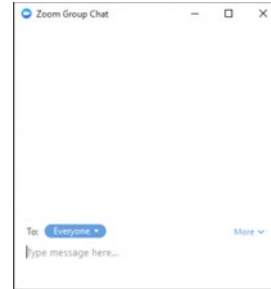
# **Improving Community Safety through Social Connections**



July 30, 2025  
3:00-4:00 PM

# Ways to Engage

- Chat Box for comments, resources, emoticons to share with “Everyone”
- Q&A Box to pose questions for presenters and hosts
- Closed Captions in English are available
- Recording, Slides, and Resource Guide will be shared



# Improving Community Safety through Social Connections







# Share with us:

*Which community safety strategies are you actively implementing in your community? (check all that apply)*



# Presenter Information

---



**Ruben Cantu**

Director of Safety and  
Wellbeing  
Prevention Institute



**John Reid**

Director of Community  
Engagement  
Urban Family



Prevention Institute

# Violence

The intentional use of physical force or power, threatened or actual, against oneself, another person, or against a group or community, that either results in or has a high likelihood of resulting in injury, death, psychological harm, maldevelopment or deprivation.



# Continuum of Strategies on the Safety Pathway

## Up Front

Strategies that create the conditions that people need to be safe.

## In the Thick

Strategies that influence risk and protective factors for people who may be at increased risk for violence perpetration and/or victimization.

## In the Aftermath

Strategies that help individuals, families, and communities heal from the multiple traumatic effects of violence.

# Pathway to Violence

Start  
here



Legacies of structural  
racism and other inequities  
from the country's founding  
through today

# Pathway to Violence



**Redlining and inequitable government investment in racially and economically segregated neighborhoods**



# Pathway to Violence



**Concentrated  
disadvantage and  
underfunded schools**

# Pathway to Violence



Economic stress, low  
educational  
achievement

# Pathway to Violence



Community violence and racial inequities in injury, trauma, and death



# Pathway to Safety



Dismantling the legacies of structural racism from the country's founding through today and building health equity and racial justice

# Pathway to Safety



**Equitable investment by financial institutions and government in neighborhoods, with anti-displacement protections**

# Pathway to Safety



Equitable economic  
opportunity,  
residential stability,  
government-community trust



# Pathway to Safety



# Pathway to Safety

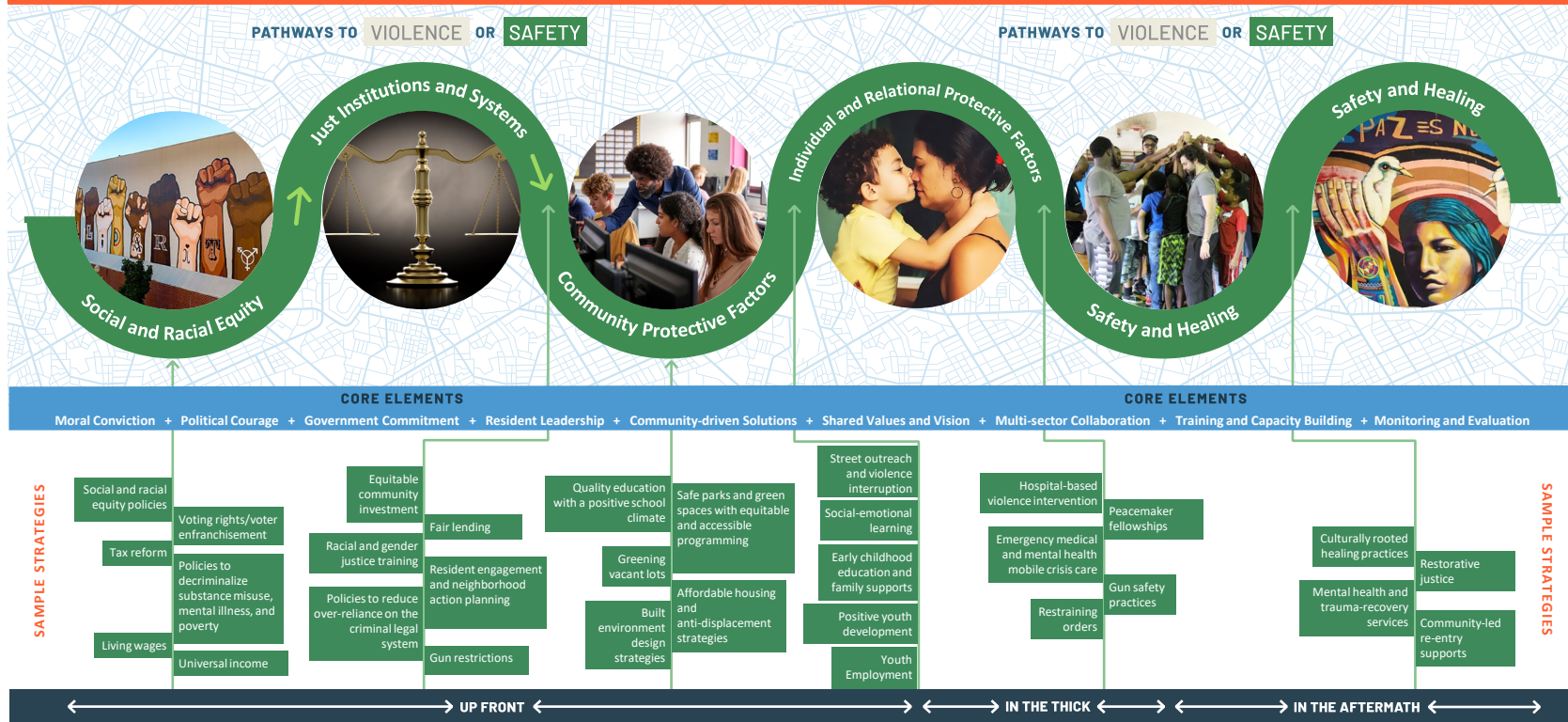


Increased safety and healing and  
decreased racial inequities in injury,  
trauma, and death

# PUBLIC HEALTH PATHWAYS TO PREVENTING VIOLENCE

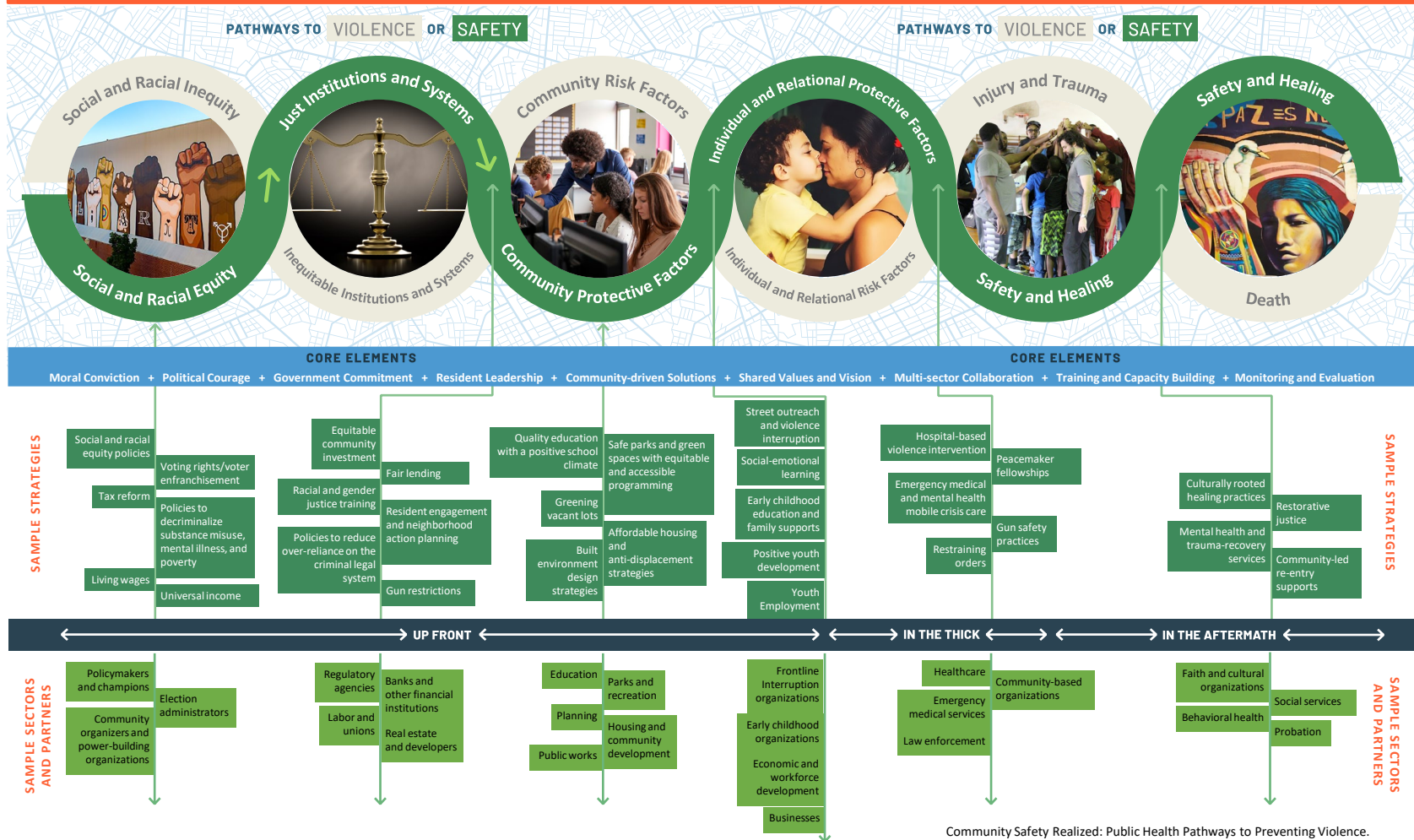


# PUBLIC HEALTH PATHWAYS TO PREVENTING VIOLENCE





# PUBLIC HEALTH PATHWAYS TO PREVENTING VIOLENCE





## PATHWAY TO SAFETY



### SAMPLE STRATEGIES

Quality education with a positive school climate

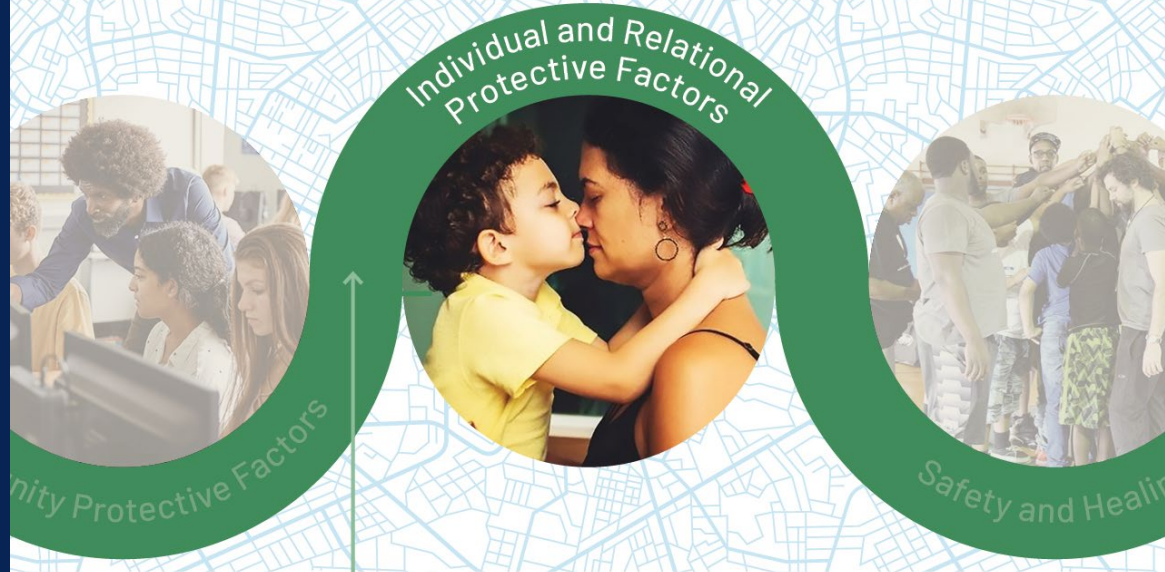
Safe parks and green spaces with equitable and accessible programming

Greening vacant lots

Affordable housing and anti-displacement strategies

Built environment design strategies

## PATHWAY TO SAFETY



### SAMPLE STRATEGIES

Street outreach and violence interruption

Social-emotional learning

Early childhood education and family supports

Positive youth development

Youth Employment

## PATHWAY TO SAFETY

Individual and Relational  
Protective Factors



Safety and Healing

Safety and Healing



### SAMPLE STRATEGIES

Hospital-based violence intervention

Peacemaker fellowships

Emergency medical and mental health mobile crisis care

Gun safety practices

Restraining orders



# SYNC Safety Learning Community Network



1

**PREVENTION**  
INSTITUTE

\* Note: Seattle is home to two SYNC Safety groups



**SAFE, CONNECTED, AND CARED FOR**





# OUR MISSION

Is to ***weave a web of care and support*** around black and brown communities, providing positive youth programs, family support, and neighborhood safety.



# OUR VISION

To create healthy and vibrant communities for urban youth and families that are ***safe, connected and cared for.***

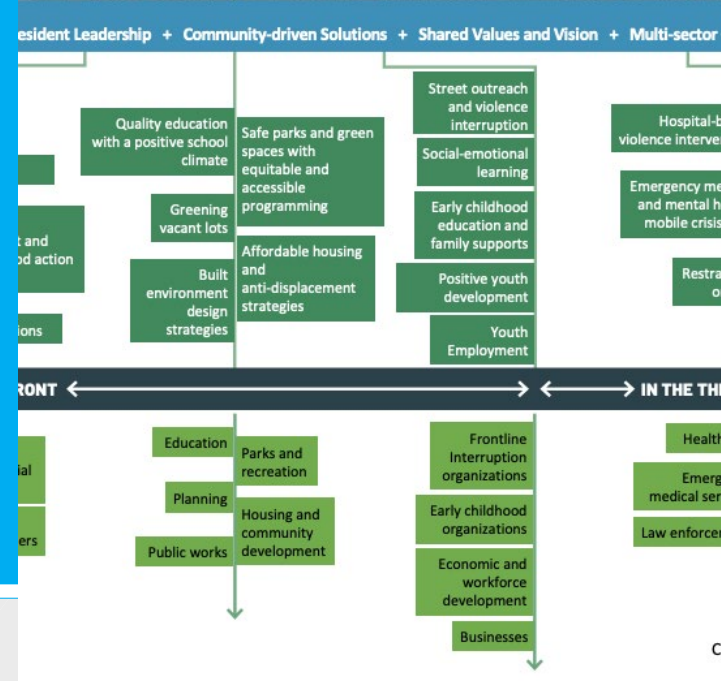


# OUR **VALUE**

Is to co-create a community filled with love and care through relentless engagement marked with service, **where everyone knows they belong to the family.**

# URBAN FAMILY'S ROLE

- Community Protective Factors
- Community Safety Team
- Individual and Relational Protective Factors
- Youth Development Programs
- Family Support and Care Efforts





# OUR **IMPACT**

Empowering youth, Strengthening families, and Creating safer communities.



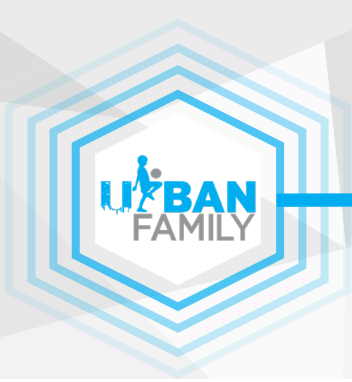
# YOUTH DEVELOPMENT



## INDIVIDUAL AND RELATIONAL PROTECTIVE FACTORS

- MENTORSHIP
- LIFE COACHING
- POSITIVE YOUTH EXPERIENCES





# FAMILY SUPPORT



## INDIVIDUAL AND RELATIONAL PROTECTIVE FACTORS

- Basic Needs and Follow up Support
- Resource Navigation
- Advocacy

# COMMUNITY SAFETY



## COMMUNITY AND PROTECTIVE FACTORS

- Crisis Response Intervention (CIR)
- Community Safety Support
- Safe Passage





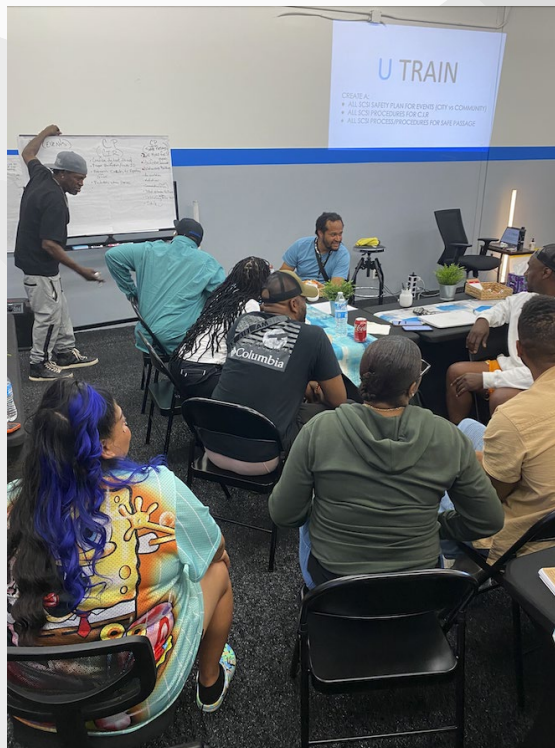
**BELONGING**





**BELONGING**





COLLABORATION & CONNECTION



TRANSFORMING SPACES





TRANSFORMING SPACES



Where Everyone Belongs to the Family





JOIN US SEPTEMBER 24, 2025

# Using Digital Spaces to Strengthen Social Connections

Webinar from 3–4 pm ET  
Discussion Group from 4–5 PM ET



**DEEPTI DOSHI**  
Co-Director  
New\_Public



**JASON VAN DRIESCHE**  
Chief of Staff  
Front Porch Forum



# Discussion Group

---

- **When:** After we close this webinar
- **What/Why:** Engage with others to deepen learning and brainstorm ways to apply ideas
- **How:** Zoom meeting – click on the link in the chat box to register and join



# THANK YOU!



**LinkedIn**

<https://www.linkedin.com/company/healthy-places-by-design>



**Newsletter**

<https://bit.ly/HPbDNewsletterSignUp>



**YouTube**

<https://www.youtube.com/@HealthyPlacesbyDesign>

Engage with Us